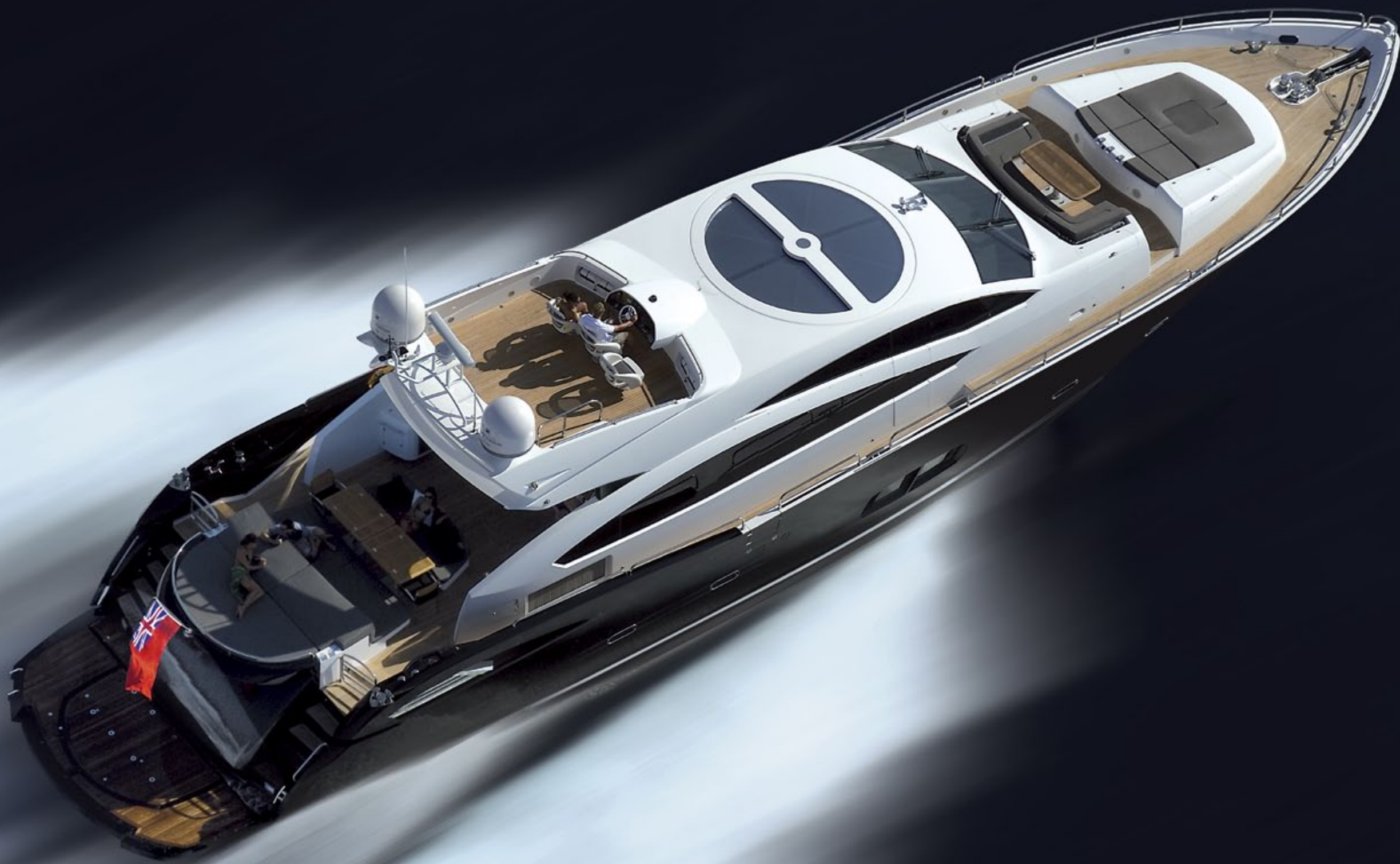


PREDATOR 92 SPORT







# PREDATOR 92 SPORT

PERFORMANCE MOTORYACHT

---

**Style:** Performance motoryacht

**Accommodation:** Up to 8 guests and 4 crew members

**Tender and toys:** Platform and garaged

**Drives:** Surface drives / Shafts

**Performance:** Up to 42 knots

---

This, the Predator 92 Sport, is perhaps the Predator that most clearly sets the pace, with its sleek sports flybridge streamlined into a powerful athletic profile that simply screams performance. And this she achieves with the line's race bred heritage and sea friendly handling whether sporting the race style Arneson drives and 5850 PS for 42 knots, or Sunseeker's own unique take on tunnels and conventional shafts and 5300 PS for more economic speeds.

Either way, a thrilling ride but with that Sunseeker extra that so few other constructors achieve, the inclusion of first class comforts, not just in styling but in actual fabrication, fit and furnishing with practical, welcoming interiors designed for living not just visiting.

Inside she's clearly a big boat with vast saloon running through on a single level to race style helm station with guest accommodation below. The galley and crew quarters are accessed from an aft stairway within the saloon.

# SPECIFICATIONS

## PREDATOR 92 SPORT

### STANDARD SPECIFICATION

#### 1 Construction

Gel coat including stripes  
Vinylester skin coat with powder bound mat  
Stitched multi axial single skin hull bottom  
Balsa and PVC foam cored hull topsides skinned with stitched multi axials  
PVC foam cored deck  
Longitudinally stiffened with foam formers over laminated with stitched multi axials  
Transversely stiffened with GRP ringframes, marine ply and sandwich bulkheads  
Superstructure PVC foam cored and skinned with stitched multi axials  
Superstructure stiffened with foam formers over laminated with stitched multi axials

#### 2 Deck

Fittings all in 316 stainless steel and chromed bronze  
Pair stainless steel bow cleats and fairleads  
Two pairs of stainless steel spring cleats with chafing bars  
Pair stainless steel stern cleats and fairleads  
Stainless steel pulpit and cockpit rails  
Stainless steel bow roller with anchor stop and devil's claw  
Stainless steel bow plate  
Single electric windlass (Lewmar V8) 24v, starboard side, foredeck control only  
Single electric capstan (Lewmar V8) 24v, port side, foredeck control only  
Anchor 80kg claw-type (galvanised)  
Anchor chain 100 metres/328 feet (12mm diameter, galvanised)  
Automatic fresh water chain wash  
Fresh water deckwash with outlets forward and aft  
Chain locker and fender stowage  
Curved direct glazed safety glass windscreen  
Pantograph windscreen wipers and washers  
Fuel filler on port and starboard sides  
Fresh-water filler  
IMCO navigation lights  
Remote controlled spotlight at bow  
Low-level courtesy lights on side decks 24v  
Bow seat and sunbathing pad  
Built in U shaped seating area foredeck  
Table for U shaped seating area at foredeck  
Skylight from VIP stateroom  
Teak-laid sidedecks

#### 3 Aft cockpit

Teak-laid self draining cockpit floor  
Stairs to flybridge on starboard side with teak treads  
Aft bench seating  
Aft facing bench seat  
2 x teak tables with folding leaves on manual adjustable bases  
Aft sunpad  
Wetbar on port side with sink  
Refrigerator in wetbar  
Icemaker in wetbar  
Chilled coolbox in wetbar  
Electric ceramic griddle AC in wetbar  
Stainless steel stern safety gates  
Engine room access hatch  
2 x stern capstan winches (Lewmar C4) 24v and fairleads  
Overhead cockpit lights 24v  
Low-level courtesy lights 24v  
Pair marine speakers connected to deck saloon  
AV system with Bose PMCI remote  
Ensign staff and socket  
Battery switches in locker  
Fire extinguisher in locker  
Sliding patio doors leading to deck saloon

#### 4 Bathing platform and stern garage

Hydraulic bathing platform (650 kg maximum capacity)  
Stairs to aft cockpit with teak treads  
Fold out stainless steel swimming ladder  
Hot and cold hand-held swimming shower  
Fresh water marina connection  
Telephone marina connection  
Dockside AC connection 1 X 100 amp Glendinning  
Cablemaster  
Hydraulically opening garage door with access to stern garage  
Lights inside garage  
2 x winches and recovery systems  
Euro spec only: Hydraulic telescopic gangway

#### 5 Flybridge deck

Stairs leading from aft cockpit  
Self draining cockpit with non slip finish  
Stainless steel aft safety rails  
Low-level flybridge lighting 24v  
Pair of marine speakers connected to CD radio in deck saloon  
Deckwash outlet  
Radar arch structure

#### 6 Flybridge helm position

3 x Individual helm seats  
Hydraulic steering  
Duplicate engine throttle controls  
Combined depth and speed display (Raymarine ST60+ Tridata)  
VHF radio handset (Raymarine RAY240 DSC dual-station VHF)  
Autopilot (Raymarine ST6002)  
Magnetic compass  
Rudder indicator  
Trim tab control  
Horn control  
Radio CD waterproof remote keypad  
Waterproof plug and socket 12v

#### 7 Boat covers

Windscreen sun screen  
Flybridge instrument cover

#### 8 Deck saloon

Sofa seating area  
Coffee table  
2 x side tables in seating area  
Bar peninsular unit  
Flatscreen television on rise and fall (40")  
DVD/CD/radio surround sound entertainment system (Bose 28)  
iPod docking station connected to AV system  
Control head for flybridge CD/radio system  
Air-conditioning  
Side windows with blinds  
Drinks cabinet with glassware storage for eight (8 x champagne, 8 x whisky, 1 x decanter)  
Stainless steel framed sliding patio door to aft cockpit with curtains and tie back  
Halogen overhead lighting 24v  
Double AC sockets  
Telephone point  
Table lamp  
Dining table  
Eight free-standing dining chairs  
Sensor connected to fire detection system  
Fitted carpet  
Skylights in forward overhead area  
Side opening door to port side deck  
Side opening door to starboard side deck  
Staircase aft leading to crew quarters  
Staircase forward leading to accommodation area

#### 9 Lower helm position

Three helm seats  
Chart stowage area  
Double AC sockets  
Telephone points x 2  
Console with dash panels  
Hydraulic power steering  
Carbon fibre effect steering wheel  
Radar/Chartplotter with GPS (2 x Raymarine E120W colour displays)  
Autopilot (Raymarine ST6002)  
Depth and speed displays (Raymarine ST60+ Tridata)  
VHF radio handset (Raymarine RAY240 DSC dual-station VHF)  
Magnetic compass  
Horn control  
Monitoring panel including generators control  
Monitoring panel for fire detection system  
Trim tab controls  
Rudder indicator  
Analogue engine instrumentation  
Fresh water gauge  
Fuel gauge  
12v socket  
Remote spotlight control  
Windscreen wipers with washers  
Screen demister  
Fire extinguisher

#### 10 Lower deck lobby

Staircase leading from deck saloon  
Halogen overhead lighting 24v  
AC socket  
Bilge access hatches  
Doors to guest cabins  
Fitted carpet  
Sensor connected to fire detection system  
Feature downlighting  
Feature corner glass

#### 11 Forward VIP stateroom

Double berth  
Foam mattress for berth  
Drawers in berth  
Bedside lights  
Dressing table  
Stool for dressing table  
Air-conditioning  
Flatscreen television (40")  
DVD/CD player with speakers  
Halogen overhead lighting 24v  
Fixed portlights  
Skylight with blind  
Double AC sockets  
Telephone point x 2 (port bedside and dressing table)  
Fitted carpet  
Sensor connected to fire detection system  
Doors to en suite and lobby

#### 12 Forward VIP en suite

Tecma toilet 24v  
Vanity top and flooring  
Washbasin  
Taps and accessories (toothbrush and glass holder, soap dispenser, towel rails and towels)  
Hot and cold water  
Separate shower compartment  
Acrylic shower door  
Air-conditioning outlet  
Extractor fan  
Mirror  
Shelved cupboard  
Halogen overhead lighting 24v  
Opening porthole with mosquito screen and venetian blind  
Shaver socket 240/110v  
Door to stateroom

#### 13 Port guest cabin

Two single berths  
Foam mattresses for berths  
Stowage under berths  
Bedside lights  
Bedside unit with storage  
Wardrobe  
Air conditioning  
Halogen overhead lighting 24v  
Opening portholes with mosquito screen and blind  
Double AC sockets  
Flatscreen television (19")  
DVD/CD player with two speakers  
Telephone point (beside bedside unit)  
Fitted carpet  
Sensor connected to fire detection system  
Doors to en suite and lobby

#### 14 Port guest en suite

Tecma toilet 24v  
Vanity top and flooring  
Washbasin  
Taps and accessories (toothbrush and glass holder, soap dispenser, towel rails and towels)  
Separate shower compartment  
Acrylic shower door  
Extractor fan  
Air conditioning outlet  
Mirror  
Shelved cupboard  
Halogen overhead lighting 24v  
Opening porthole with mosquito screen and venetian blind  
Shaver socket 240/110v  
Door to guest cabin

#### 15 Starboard guest cabin

Two single berths  
Foam mattresses for berths  
Stowage under berths  
Bedside lights  
Bedside unit with storage  
Wardrobe  
Air conditioning  
Halogen overhead lighting 24v  
Opening portholes with mosquito screen and blind  
Double AC sockets  
Flatscreen television (19")  
DVD/CD player with two speakers  
Telephone point (beside bedside unit)  
Fitted carpet  
Sensor connected to fire detection system  
Doors to en suite and lobby

#### 16 Starboard guest en suite

Tecma toilet 24v  
Vanity top and flooring  
Washbasin  
Taps and accessories (toothbrush and glass holder, soap dispenser, towel rails and towels)  
Separate shower compartment  
Acrylic shower door  
Extractor fan  
Air-conditioning outlet  
Mirror  
Shelved cupboard  
Halogen overhead lighting 24v  
Opening porthole with mosquito screen and venetian blind  
Shaver socket 240/110v  
Door to guest cabin

#### 17 Master aft stateroom

Double berth  
Foam mattress for berth  
Drawers in berth  
Bedside units with storage  
Bedside lights  
Dressing table  
Footstool for sofa/dressing table  
Sofa  
Air-conditioning  
Halogen overhead lighting 24v  
Table lamps x 2  
Fixed and opening portholes (with mosquito screens) with blinds  
Double AC sockets  
Telephone points x 2 (dressing table and starboard bedside)  
Flatscreen television (40")  
DVD/CD/Radio entertainment system with two speakers and sub woofer (Bose 321)  
Fitted carpet  
Sensor connected to fire detection system  
Doors to en suite, walk in wardrobe and lobby

#### 18 Master walk-in wardrobe

Hanging rails  
Shelves  
Full-length mirror  
Halogen overhead lighting 24v  
Fitted carpet  
Door to stateroom

#### 19 Master en suite

Tecma toilet 24v  
Bidet  
Vanity top and flooring  
Washbasin  
Hot and cold water  
Taps and accessories (toothbrush and glass holder, soap dispenser, towel rails and towels)  
Separate shower compartment  
Acrylic shower door  
Extractor fan  
Air conditioning outlet  
Mirrors  
Halogen overhead lighting 24v  
Opening porthole with mosquito screen and venetian blind  
Shaver socket 240/110v  
Door to stateroom

#### 20 Galley and crew mess

Stairs leading from deck saloon  
Safety flooring  
American style fridge, freezer with icemaker AC  
Four ring ceramic hob AC  
Hob extractor AC  
Slimline dishwasher AC  
Washer/dryer AC  
Stainless steel sink  
Tap with hot and cold water  
Rubbish bin  
Chinaware with stowage (8 settings)  
Cutlery (8 settings)  
Storage consisting of cupboards, drawers and top-box lockers  
Halogen overhead lighting 24v  
Lighting under top box lockers  
Double AC sockets  
Telephone point  
Fire extinguisher  
Fire blanket  
First aid kit  
Sensor connected to fire detection system  
Sofa seating area  
Table with folding leaf  
Flatscreen television (19")  
CD/DVD player with two speakers  
Doors leading to crew cabins  
Euro spec only: Microwave/oven AC  
US spec only: Oven AC  
US spec only: Small microwave AC

#### 21 Aft port crew cabin

Twin bunk berths with foam mattresses  
Air conditioning  
Halogen overhead lighting 24v  
Double AC socket  
Telephone point  
Bedside lights  
Opening porthole with mosquito screen and curtains  
Radio/CD player with two speakers  
Fitted carpet  
Sensor connected to fire detection system  
Doors to galley/crew mess and crew en suite

#### 22 Forward port crew cabin

Twin bunk berths with foam mattresses  
Air-conditioning  
Halogen overhead lighting 24v  
Double AC socket  
Telephone point  
Bedside lights  
Opening porthole with mosquito screen and curtains  
Radio/CD player with two speakers  
Fitted carpet  
Sensor connected to fire detection system  
Doors to galley/crew mess and crew en suite

#### 23 Crew en suite

Tecma toilet 24v  
Washbasin  
Shower cubicle  
Mirror  
Vanity unit  
Halogen overhead lighting 24v  
Shaver socket 240/110v  
Doors leading to crew cabins

#### 24 Engine compartment and ancillaries

Soundproofing throughout  
Fuel filters/water separators to engines  
Fuel filters/water separators to generators  
FM200 manual/automatic fire extinguishing system combined with engines, generators and fans shutdown  
2 x extractor fans AC  
Automatic bilge pumps combined with high level alarm  
Strainers to all raw water inlets  
Sensor connected to fire detection system

## 25 Electrical system

Euro spec only: 2 x 25kW @ 50Hz slow speed Kohler generators with underwater silent exhaust  
US spec only: 2 x 28kW @ 60Hz slow speed Kohler generators with underwater silent exhaust  
Dockside AC connection 1 x 100 amp Glendinning cablemaster  
24v and 12v DC electrical system with full circuit breaker protection  
2 x generator batteries 12v circuit  
4 x domestic batteries 24v circuit  
8 x engine batteries 24v circuit  
Alternator split charging system  
Remote battery switches controlled from locker in cockpit  
95 amp battery charger for 24v circuit  
20 amp battery charger for 12v circuit  
2 x 2 kW immersion heaters for each calorifier  
AC sockets throughout the boat  
Fire detection system with monitoring panel beside lower helm

## 26 Underwater gear

5 blade NAB bronze propellers  
Bronze (MB2) P brackets  
90mm Temet 25 propeller shafts  
Self aligning shaft seal with spare seal  
High performance bronze rudders and struts  
Seacocks on all underwater fittings  
Full cathodic bonding system to zinc anodes  
Hydraulic bow thruster (30hp sequential operation)  
Hydraulic stern thruster (30hp sequential operation)  
Hydraulic trim tabs  
Antifouling

## 27 Systems

Hydraulic power steering 24v  
Electric toilet system with integrated macerator (Tecma 24v) with two switch control  
Toilets discharging overboard or to black-water tank  
Black waste water tank discharging to dockside or overboard  
Washbasins, showers, air conditioning fans units discharging to grey water sump  
Aluminium fresh water tank with electric sending unit  
Integral GRP fuel tank with electric sending unit  
Water pressure system (24v)  
Hot-water circulating pump AC  
2 x 150 litre calorifiers, each with 2 x 2kW immersion heaters  
Chilled water air-conditioning system (reverse cycle) AC  
Automatic bilge pumping to all watertight compartments combined with high level alarm (24v)

## 28 Miscellaneous and supply items

Retractable boat hook  
6 x docking lines  
(6 x 15 metre, 20mm diameter, black)  
1 x tender line  
(1 x 10 metre, 10mm diameter, black)  
8 x fenders  
(F7, 15 inches x 41 inches, white)  
8 x fender lines  
(8 x 3.5 metre, 10mm diameter, black)  
Stainless steel flagstaff with line  
Pennant mast with pennant flag  
Mosquito screens for all openable portlights  
12 x towel sets  
First aid kit  
Fire blanket  
Deckwash fitting and hose reel  
Vacuum cleaner

# PRINCIPAL CHARACTERISTICS

PREDATOR 92 SPORT

## PRINCIPAL CHARACTERISTICS

<b>Length overall – (incl. pulpit and transom platform)</b>	28.16m	92'5"
<b>Beam – (maximum)</b>	6.34m	20'10"
<b>Fuel capacity</b>	8,500 litres	2,245 US gal.
<b>Fresh-water capacity</b>	1,500 litres	396 US gal.
<b>Black-water capacity</b>	435 litres	115 US gal.
<b>Propulsion</b>	Twin fixed-pitch propellers or triple Arneson surface drives	
<b>Generators – standard</b>	2 x 25kW @ 50Hz 230v single phase (Euro) 2 x 28kW @ 60Hz 120/240v single phase (US)	

## TWIN SHAFT VERSION

<b>Draft – (@ full load incl. props)</b>	2.09m	6'10"
<b>Displacement – (@ half load)</b>	68,800kg	151,360lb
<b>Maximum speed</b>	up to 35 knots*	
<b>Cruising speed</b>	up to 23 knots*	
<b>Range (nautical miles)</b>	up to 400*	

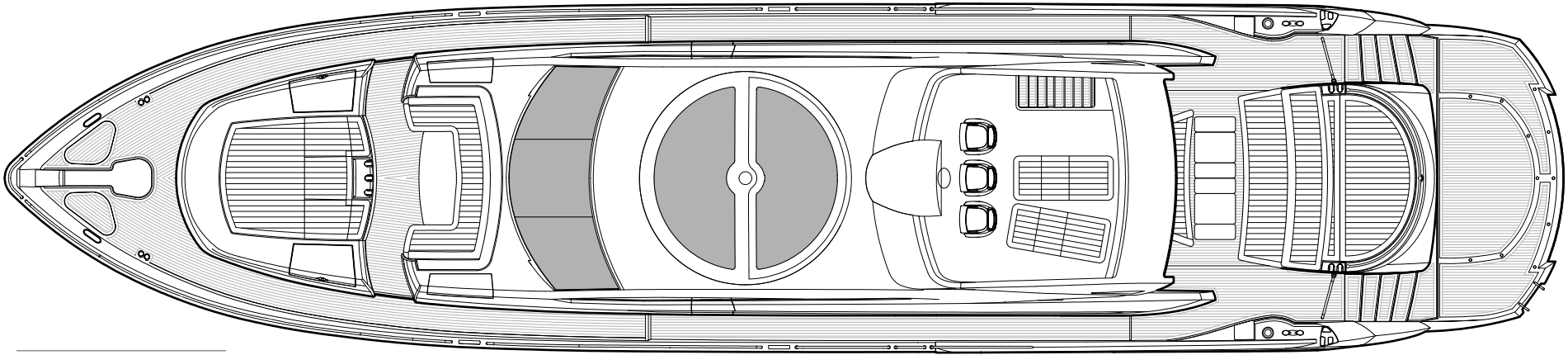
## TRIPLE ARNESON VERSION

<b>Draft – (@ full load incl. props)</b>	1.67 – 2.00m	5'6" – 6'7"
<b>Displacement – (@ half load)</b>	72,800kg	160,160lb
<b>Maximum speed</b>	up to 42 knots*	
<b>Cruising speed</b>	up to 33 knots*	
<b>Range (nautical miles)</b>	up to 300*	

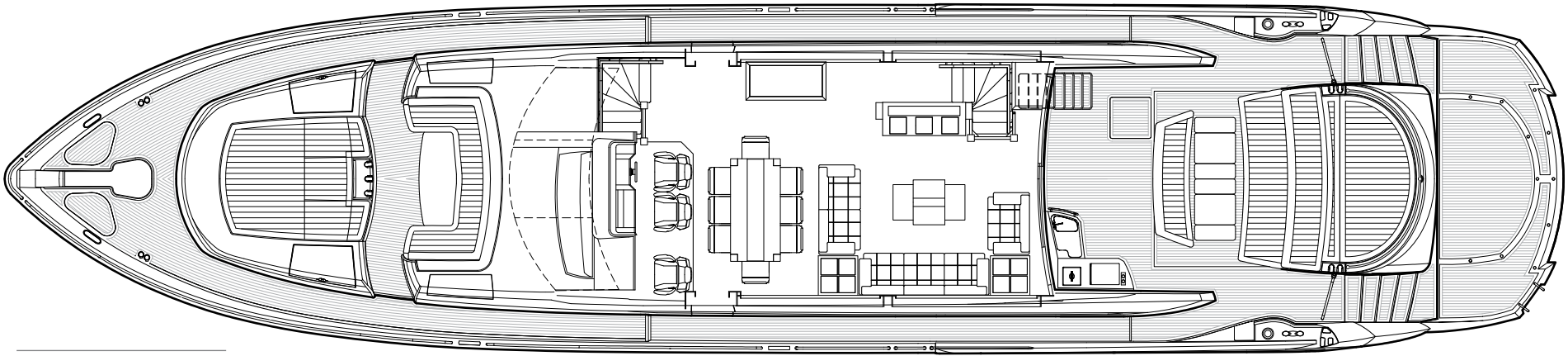
All principal characteristics and specifications are provisional and subject to final specification.

# GENERAL ARRANGEMENTS

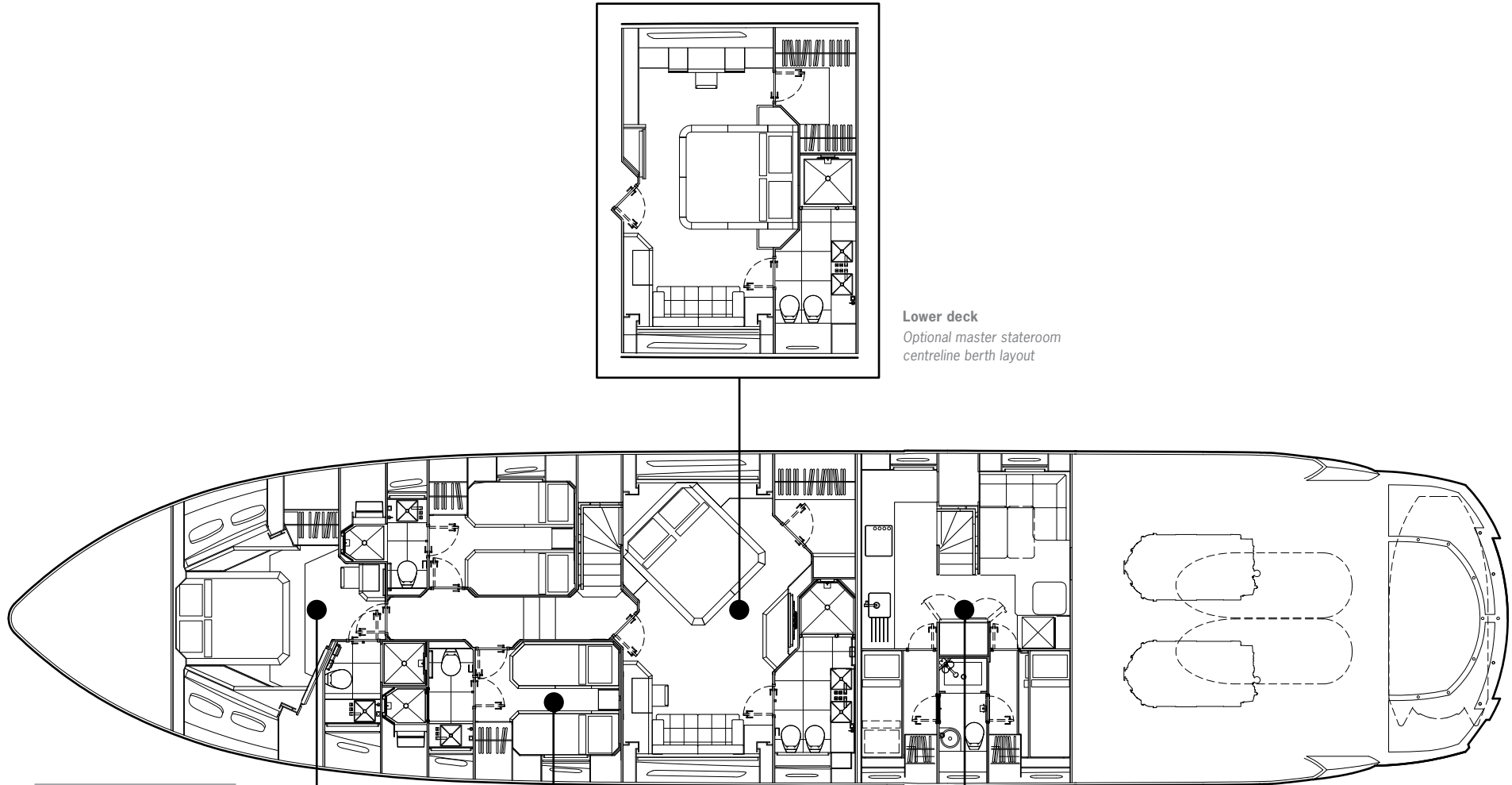
PREDATOR 92 SPORT



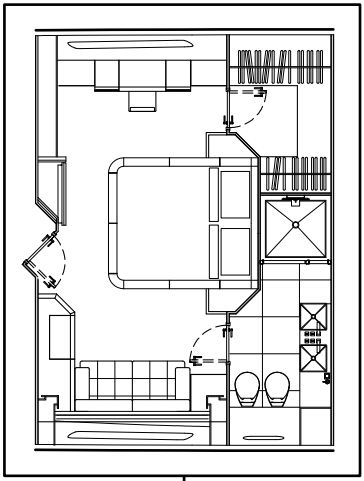
Flybridge



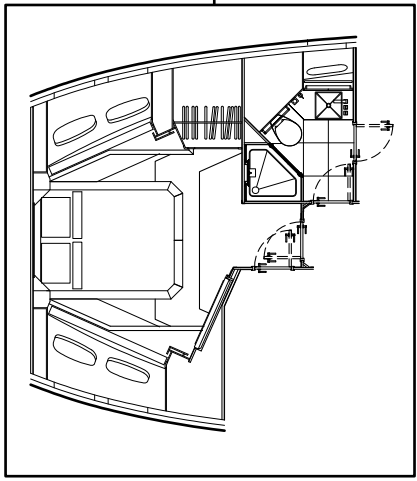
Main deck



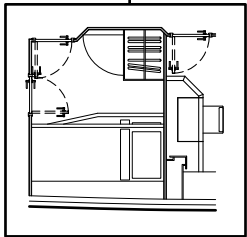
Lower deck



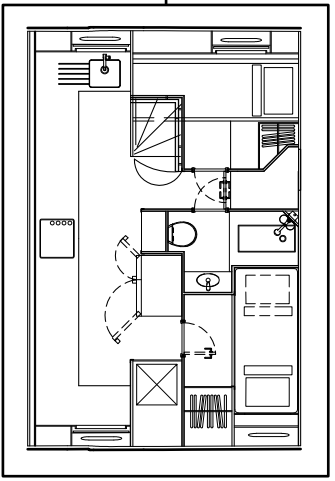
Lower deck  
Optional master stateroom  
centreline berth layout



Lower deck  
Optional day head layout



Lower deck  
Optional port Pullman and  
enlarged master layout



Lower deck  
Optional crew/galley layout



## Awards

Sunseeker's success over the years is clearly underlined by the following list of national and international awards and achievements.

2011	Asia Boat Awards	Best brand presence in Asia	2004	Sydney Boat Show 2004	Best Overall Display
2011	European CEO corporate lifestyle awards	Best luxury brand	2004	Sydney Boat Show 2004	Best Marina Display
2011	Showboats Design Awards Florida	Naval architecture motor yacht 'Evil Zana' Predator 130.	2003	Australian Marine Awards	Manhattan 56, Award for Excellence
2010	World Superyacht Awards	Predator 130 'Evil Zana' – finalist	2003	Australian Marine Awards	Predator 68, Best Imported Non-Trailable Yacht
2010	Quintessentially Awards	Yacht charter of the year	2002	Entrepreneur of the Year Award	Robert Braithwaite MBE
2010	Sydney Boat Show	Boating Industry Association of NSW – Best Marina Display 2010	2001	Best Power Design Award	105 Yacht, The Superyacht Society
2010	Sydney Boat Show	Boating Industry Association of NSW – Best Overall Display	2001	Best Power Interior Award	105 Yacht, The Superyacht Society
2010	Asia Boating Awards	Predator 60 – Best Production Motor Yacht 51 to 80 feet	2001	President's Award	Southern California Marine Association
2009	Sydney Boat Show 2009	Display of Excellence	2000	Queen's Award for Enterprise	Continuous innovation and development
2009	Croatia Boat Show 2009	Predator 92 Sport – best in class	2000	The Times Exporter of the Year	Times Export Awards
2009	Croatia Boat Show 2009	30 Metre Yacht – best in class	2000	Robb Report Award	Best of the Best, Boating and Sailing
2009	Croatia Boat Show 2009	Best boat show stand	1999	Robb Report Award	Best of the Best, Boating and Sailing
2008	UK Motor Boat of the Year Awards 2008	Manhattan 60	1999	Motorboat of the Year	Predator 75, BT British Nautical Awards
2007	European Powerboat of the Year	Superhawk 43	1998	Superyacht Design Award	Manhattan 74, Superyacht Design Awards
2007	Asia Pacific Boating Awards	90 Yacht, Best of the Best	1998	Editor in Chief Awards	Yachts Magazine
2007	Modern Boating Magazine 2007	Portofino 47, Imported Powerboat of the Year	1997	Lifetime Achievement Award	Robert Braithwaite MBE, RYA Awards
2007	Australian Marine Industries Federation Awards	Predator 62, Imported Powerboat of the Year	1996	Motorcruiser of the Year Award	RYA British Nautical Awards
2007	Nominated by The Superyacht Society	37 Metre Yacht 'The Snapper'	1996	Exporter of the Year Award	DCCI Export Awards
2007	Queen's Award for Enterprise	International Trade	1995	Boat Builder of the Year Award	RYA/BMIF British Nautical Awards
2007	Robert Braithwaite is honoured with CBE	The Queen's Birthday Honours List	1994	Queen's Award for Export Achievement	Queen's Awards for Industry
2006	Nominated for three Superyacht Awards	Predator 108 'SHIVER'	1992	Best in the World Award	Renegade 60, Boating Magazine
2005	Australian Marine Industries Federation Awards	75 Yacht, Non-Trailable Boat Award	1992	Robert Braithwaite is honoured with MBE	The Queen's Birthday Honours List
2005	Australian Marine Industries Federation Awards	Portofino 46, Commendation	1990	Exporter of the Year	SW International Business Awards
2005	Modern Boating, Power Boat of the Year Awards	Predator 68, Imported Powerboat of the Year	1989	Queen's Award for Export Achievement	Queen's Awards for Industry
2005	Boats.com Marine Industry Web Awards	Manufacturers Category for <a href="http://www.sunseeker.com">www.sunseeker.com</a>	1987	Queen's Award for Export Achievement	Queen's Awards for Industry



Sunseeker International Limited has CE Approval which is compulsory for all boats with a LOA of 24m and below when sold in the EU.



QUINTESSENTIALLY BRITISH

\*Every attempt has been made to give accurate information, but performance and range figures are estimates given as a guide only. Dirt or growth on the hull, tuning of the engines, size, make of engines fitted, damage to propellers, the temperature of the air and water, the weight of fuel, water, stores, number of people, propeller pitch, quality of fuel and other matters, can all affect a boat's performance and range. For these and other reasons we can give no performance, range or other guarantees, and neither such guarantees nor anything contained herein constitutes an offer of contract or any representation or agreement, or may otherwise be relied upon. The photographs and artist's impressions in this brochure are from existing models in the Sunseeker range. There may be items shown in these photographs and artist's impressions that are not included in the standard inventory of the models shown. Specifications contained in this brochure are provisional only and should not be relied upon and may refer to models only intended for sale in a particular territory and not generally. No guarantee is given that any model will be available in any territory; however by contacting us we can advise you of models that are likely to be available in each territory. In some examples herein we have referred to measurements, specifications or other details applicable to a particular territory and no guarantee is given that these are applicable to your territory. Actual specifications will be provided when a sales order or enquiry is placed with us or our approved Sunseeker distributor. Specifications for models sold in different markets may vary and specifications and models may be changed or withdrawn at any time without prior notice. The individual specification for each vessel will be agreed as part of the sale contract between the purchaser and the Sunseeker distributor. Distributors are independently owned and operated entities, and therefore Sunseeker distributors are not owned by Sunseeker International Limited or any subsidiaries or other related entity of this company nor are they their agents. Therefore they have absolutely no authority to commit Sunseeker International Limited, or any subsidiary or other related entities of Sunseeker International Limited to any pledge, contract or agreement in any form or by any means unless first accepted in writing by Sunseeker International Limited. For ease of reference we have, in some cases, referred to "we" or "Sunseeker" and these terms should be taken to mean Sunseeker International Limited.