

PREDATOR 84







# PREDATOR 84

PERFORMANCE MOTORYACHT

---

**Style:** Performance motoryacht

**Accommodation:** Up to 8 guests and 3 crew members

**Tender and toys:** Garaged

**Drives:** Surface drives / Shafts

**Performance:** Up to 44 knots

---

This is the Predator for those who want to distance cruise, combining all the speed and looks of the sports line with incredible interior space, thanks to a beam almost that of the bigger 92.

Externally social areas include a comfortable aft cockpit with sunpad and table seating, wetbar and BBQ, while the foredeck sports the arrowhead configuration of dining arrangement and further sunpad. The option of sports flybridge is also popular for that wind in the hair experience.

Stepping into the saloon via either the pantograph door siding the three seat race-style helm station or the wide opening sliding cockpit door, the saloon reveals like a Manhattan loft below a vast opening roof that adds further to the already daylight bright interior. The four guest suites on the lower deck also enjoy plentiful natural light with their large hullside windows.

## STANDARD SPECIFICATION

**1 Construction**

Hand-laid GRP  
Gel coat including stripes  
Vinylester skin coat with powderbound mat  
Stitched multi-axial reinforced single skin bottom  
Balsa cored hull topsides  
PVC foam cored deck and superstructure  
Hull stiffened with longitudinal stringers supported by transverse bulkheads and floors

**2 Deck**

Fittings all in 316 stainless steel and chromed bronze  
Pair stainless steel bow cleats and fairleads  
Stainless steel spring cleats with chafing bars  
Pair stainless steel stern cleats and fairleads  
Stainless steel pulpit and cockpit rails  
Stainless steel bow roller assembly  
Stainless steel bow plate  
Anchor 80kg claw-type (galvanised)  
Chain locker  
Anchor chain 100 metres/328 feet (12mm diameter galvanised)  
Automatic fresh water chain wash  
Single electric windlass (Lewmar V8) 24v, starboard side, foredeck control only  
Fresh water deckwash with outlets forward and aft  
Storage lockers  
Curved direct glazed safety glass windscreen  
Pantograph windscreen wipers and washers  
Fuel filler on port and starboard sides  
Fresh-water filler  
IMCO navigation lights  
Remote controlled spotlight  
Low-level courtesy lights on side decks 24v  
Foredeck sunbathing pad  
Cup holders beside foredeck sunpad  
Built in U shaped seating area at foredeck  
Table for U shaped seating area at foredeck  
Skylight from VIP stateroom  
Teak-laid side decks  
Single air horn

**3 Aft cockpit**

Teak-laid self-draining cockpit floor  
Aft sunpad  
Built in seating area  
Inboard facing seating  
Teak table with folding leaves on GRP base  
Wetbar on starboard side with sink  
Refrigerator in wetbar  
Icemaker in wetbar  
Electric ceramic griddle AC in wetbar  
Stainless steel stern safety gates  
Engine room access hatch  
2 x stern capstan winches (Lewmar C4) 24v and fairleads  
Overhead cockpit lights 24v  
Low-level courtesy lights 24v  
Pair marine speakers connected to deck saloon  
AV system with Bose PMCI remote  
Ensign staff and socket  
Battery switches in locker  
Fire extinguisher in locker  
Sliding patio doors leading to deck saloon

**4 Bathing platform and stern garage**

Teak-laid fixed platform  
Stairs to aft cockpit with teak treads  
Fold out stainless steel swimming ladder  
Hot and cold hand-held swimming shower  
Fresh water marina connection  
Telephone marina connection  
Hydraulically opening garage door with access to stern garage  
Crane inside garage to launch and recover tender or jet ski  
Tender launch and recovery system including remote controlled winch  
Dockside AC connection 1 x 100amp Glendinning cabledmaster  
Euro spec only: Hydraulic telescopic gangway

**5 Flybridge deck**

Stairs leading from aft cockpit  
Stainless steel aft safety rails  
Low-level flybridge lighting 24v  
Pair marine speakers connected to dedicated CD radio in deck saloon  
Deckwash outlet  
Radar arch structure

**6 Flybridge helm position (optional)**

3 x helm seats  
Console  
Steering wheel  
Hydraulic power steering  
Engine throttle controls  
Engine stop start keys  
Bow and stern thruster control  
Waterproof remote for CD/radio  
Depth and speed display (Raymarine ST60+ Tridata)  
Autopilot (Raymarine ST6002 autopilot)  
VHF radio handset (Raymarine RAY240 DSC dual-station VHF)  
Magnetic compass  
Horn control  
Teak decking

**7 Boat covers**

Windscreen sunscreen

**8 Deck saloon**

Stainless steel framed sliding patio door to aft cockpit with curtains and tie back  
Sofa seating area  
Coffee table  
Two side tables in seating area  
Flatscreen TV on rise and fall (40")  
DVD/CD/radio surround sound entertainment system (Bose 28)  
iPod docking station connected to Bose system  
Air-conditioning  
Side windows with blinds  
Drinks cabinet with glassware storage for eight (8 x champagne, 8 x whisky, 1 x decanter)  
Halogen overhead lighting 24v  
Double AC sockets  
Telephone point  
Table lamps  
Dining table  
Eight freestanding dining chairs  
Sensor connected to fire detection system  
Sliding hardtop roof with skylights  
Side opening door to port side deck  
Side opening door to starboard side deck  
Staircase aft leading to crew quarters  
Staircase forward leading to accommodation area

**9 Helm position**

Three helm seats  
Chart stowage area  
Double AC sockets  
Telephone points x 2  
Console with dash panels  
Hydraulic power steering  
Steering wheel  
Radar/chartplotter with GPS (2 x Raymarine E120W colour displays)  
Autopilot (Raymarine ST6002 autopilot)  
Depth and speed displays (Raymarine ST60+ Tridata)  
VHF radio handset (Raymarine RAY240 DSC dual-station VHF)  
Magnetic compass  
Horn control  
Monitoring panel including generators control  
Monitoring panel for fire detection system  
Trim tab controls  
Rudder/drive indicator (subject to drive option)  
Analogue engine instrumentation  
Fuel gauges  
12v socket  
Remote spotlight control  
Windscreen wipers with washers  
Air-conditioning  
Screen demister  
Fire extinguisher

**10 Lower deck lobby**

Staircase leading from deck saloon  
Halogen overhead lighting 24v  
AC socket  
Bilge access hatches  
Doors to guest cabins  
Fitted carpet  
Sensor connected to fire detection system  
Halogen overhead lighting 24v

**11 Forward VIP stateroom**

Double berth  
Foam mattress for berth  
Drawers in berth  
Bedside lights  
Dressing table  
Stool for dressing table  
Air-conditioning  
Flatscreen TV (40")  
DVD/CD player with two speakers  
Halogen overhead lighting 24v  
Fixed portlights with blinds  
Skylight with mosquito screen and blind  
Double AC sockets  
Telephone point x 2 (standard bedside and dressing table)  
Fitted carpet  
Sensor connected to fire detection system  
Doors to en suite, walk-in wardrobe and lobby

**12 Forward VIP en suite**

Tecma toilet 24v  
Vanity top and flooring  
Washbasin  
Taps and accessories (toothbrush and glass holder, soap dispenser, towel rails and towels)  
Hot and cold water  
Separate shower compartment  
Acrylic shower door  
Air-conditioning outlet  
Extractor fan  
Mirror  
Shelved cupboard  
Drawers in vanity front  
Halogen overhead lighting 24v  
Opening porthole with mosquito screen and venetian blind  
Shaver socket 240/110v  
Door to stateroom

**13 Forward VIP walk-in wardrobe**

Hanging rails  
Shelves  
Full-length mirror  
Halogen overhead lighting 24v  
Fitted carpet

**14 Port guest cabin**

Two single berths  
Foam mattresses for berths  
Stowage under berths  
Overhead reading lights  
Bedside unit with storage  
Wardrobe  
Air-conditioning  
Halogen overhead lighting 24v  
Opening porthole with mosquito screen and blind  
Double AC sockets  
Flatscreen TV (19")  
DVD/CD player with two speakers  
Telephone point (beside bedside unit)  
Fitted carpet  
Sensor connected to fire detection system  
Doors to en suite and lobby

**15 Port guest en suite**

Tecma toilet 24v  
Vanity top and flooring  
Washbasin  
Taps and accessories (toothbrush and glass holder, soap dispenser, towel rails and towels)  
Separate shower compartment  
Acrylic shower door  
Extractor fan  
Air-conditioning outlet  
Mirror  
Shelved cupboard  
Drawers in vanity front  
Halogen overhead lighting 24v  
Opening porthole with mosquito screen and venetian blind  
Shaver socket 240/110v  
Door to guest cabin

**16 Starboard guest cabin**

Two single berths  
Foam mattresses for berths  
Stowage under berths  
Overhead reading lights  
Bedside unit with storage  
Wardrobe  
Air-conditioning  
Halogen overhead lighting 24v  
Opening porthole with mosquito screen and blind  
Double AC sockets  
Flatscreen TV (19")  
DVD/CD player with two speakers  
Telephone point (beside bedside unit)  
Fitted carpet  
Sensor connected to fire detection system  
Doors to en suite and lobby

**17 Starboard guest en suite/day head**

Tecma toilet 24v  
Vanity top and flooring  
Washbasin  
Taps and accessories (toothbrush and glass holder, soap dispenser, towel rails and towels)  
Separate shower compartment  
Acrylic shower door  
Extractor fan  
Air-conditioning outlet  
Mirror  
Drawers in vanity front  
Halogen overhead lighting 24v  
Opening porthole with mosquito screen and venetian blind  
Shaver socket 240/110v  
Door to guest cabin and lobby

**18 Master aft stateroom**

Double berth  
Foam mattress for berth  
Drawers in berth  
Bedside units with storage  
Bedside lights  
Dressing table  
Stool for dressing table  
Sofa  
Air-conditioning  
Halogen overhead lighting 24v  
Fixed and opening feature portholes (with mosquito screens) with blinds  
Double AC sockets  
Telephone points x 2 (dressing table and port bedside)  
Flatscreen TV (40")  
DVD/CD/Radio entertainment system with two speakers and sub woofer (Bose 321)  
Fitted carpet  
Sensor connected to fire detection system  
Doors to en suite, walk in wardrobe and lobby

**19 Master en suite**

Tecma toilet 24v  
Vanity top and flooring  
Washbasin  
Hot and cold water  
Taps and accessories (toothbrush and glass holder, soap dispenser, towel rails and towels)  
Separate shower compartment  
Acrylic shower door  
Extractor fan  
Air-conditioning outlet  
Mirrors  
Shelved cupboard  
Drawers in vanity front  
Halogen overhead lighting 24v  
Opening porthole with mosquito screen and venetian blind  
Shaver socket 240/110v  
Door to stateroom

**20 Master walk-in wardrobe**

Hanging rails  
Shelves  
Full-length mirror  
Halogen overhead lighting 24v  
Fitted carpet  
Door to stateroom

**21 Galley and crew mess**

Stairs leading from deck saloon  
Safety flooring  
American style fridge, freezer with icemaker AC  
Four ring ceramic hob AC  
Hob extractor AC  
Slimline dishwasher AC  
Washer/dryer AC  
Stainless steel sink  
Tap with hot and cold water  
Rubbish bin  
Chinaware with stowage (8 settings)  
Cutlery (8 settings)  
Storage consisting of cupboards, drawers and top-box lockers  
Seating area  
Fold away table  
Halogen overhead lighting 24v  
Opening portlight  
Double AC sockets  
Lighting under top box lockers  
Fire extinguisher  
Fire blanket  
First Aid kit  
Doors leading to crew quarters and crew toilet/shower  
Sensor connected to fire detection system  
Telephone point  
Euro spec only: Microwave/oven AC  
US spec only: Small microwave AC  
US spec only: Oven AC

**22 Port crew cabin**

Single berth  
Foam mattress for berth  
Air-conditioning  
Halogen overhead lighting 24v  
Double AC socket  
Bedside light  
Opening porthole with mosquito screen and curtains  
Fitted carpet  
Sensor connected to fire detection system  
Door to galley/crew mess

**23 Starboard crew cabin**

Twin bunk berths  
Foam mattresses for berths  
Air-conditioning  
Halogen overhead lighting 24v  
Double AC socket  
Bedside lights  
Opening porthole with mosquito screen and curtains  
Fitted carpet  
Sensor connected to fire detection system  
CD radio with two speakers  
Door to galley/crew mess

#### 24 Crew toilet/shower

Tecma toilet 24v  
Washbasin  
Shower cubicle  
Mirror  
Vanity unit  
Halogen overhead lighting 24v  
Shaver socket 240/110v  
Door to galley/crew mess

#### 25 Engine compartment and ancillaries

Soundproofing throughout  
Fuel filters/water separators to engines  
Fuel filters/water separators to generators  
FM200 manual/automatic fire extinguishing system combined with engines, generators and fans shutdown  
Automatic bilge and flood pumps with high level alarms  
Air extraction fans, AC  
Generator exhaust silencers and water separators  
Engine exhaust dry risers and water injection  
Strainers to all raw water inlets  
Sensor connected to fire detection system

#### 26 Electrical system

Euro spec only: 2 x 25kW @ 50Hz slow speed  
Kohler generators with underwater silent exhaust and sound box  
USA spec only: 2 x 28kW @ 60Hz slow speed  
Kohler generators with underwater silent exhaust and sound box  
Dockside AC connection 1 x 100 amp Glendinning cablemaster  
Galvanic isolator  
Semi-automatic AC power management system  
24v and 12v DC electrical system with full circuit breaker protection  
8 x engine batteries 24v circuit  
8 x domestic batteries 24v circuit  
4 x generator batteries 12v circuit  
Alternator split charging system  
Remote battery switches controlled from aft cockpit locker  
2 x 95 amp battery charger for 24v circuits  
40 amp battery charger for 12v circuits  
2 x 2kW immersion heaters for calorifier  
AC sockets throughout the boat  
24v hand light and cable  
Fire detection system with sensors in all cabins and monitoring beside main deck helm position

#### 27 Underwater gear

NAB 5 blade propellers  
Bronze (MB2) P-brackets  
90mm Temet 25 propeller shafts  
Self aligning shaft seal with spare seal  
High-performance bronze rudders  
Valves to all underwater skin fittings  
Full cathodic bonding system to zinc anodes  
Stainless steel trim tabs  
Hydraulic bow thruster (30hp, sequential operation)  
Hydraulic stern thruster (30hp, sequential operation)  
Antifouling

#### 28 Systems

Hydraulic power steering (24v)  
Electric toilet system with integral macerator (Tecma 24v) with two-switch control  
Toilets discharging overboard or to black water tank  
Black water tank discharging to dockside or overboard  
Aluminium fresh water tank with electric sending unit  
Integral GRP fuel tank with electric sending unit  
Water pressure system (24v)  
Hot-water tank, 200 litre (calorifier with 2 x 2kW immersion heaters)  
Hot-water circulating pump, AC  
Washbasins, showers and air conditioning fan coils to drain to grey water tank  
Grey-water tank discharging overboard  
Chilled water air conditioning system (reverse cycle), AC  
Bilge pumping system (24v)  
FM200 manual/automatic fire extinguishing system combined with engines, generators and fans shutdown  
Auxiliary hydraulics for trim tabs (24v)

#### 29 Miscellaneous and supply items

Retractable boat hook  
6 x docking lines (6 x 15 metre, 20mm diameter, black)  
1 x tender line (1 x 10 metre, 10mm diameter, black)  
8 x fenders (F7, 15' x 41", white)  
8 x fender ties (8 x 3.5 metre, 10mm diameter, black)  
Flagstaff with line  
Pennant mast with pennant flag  
Mosquito screens for openable portlights  
Vacuum cleaner  
Spare bulbs  
Small toolkit  
12 x towel sets  
First aid kit  
Fire blanket  
Leather cleaning kit  
Lead lamp  
Deckwash fitting and hose reel  
Portable fire extinguishers

# PRINCIPAL CHARACTERISTICS

PREDATOR 84

## PRINCIPAL CHARACTERISTICS

<b>Classification</b>	CE	
<b>Length overall – (incl. pulpit and transom platform)</b>	26.48m	86'11"
<b>Beam – (maximum)</b>	6.34m	20'10"
<b>Fuel capacity</b>	7,500 litres	1,982 US gal.
<b>Fresh-water capacity</b>	1,200 litres	317 US gal.
<b>Black-water capacity</b>	435 litres	115 US gal.
<b>Propulsion</b>	Twin fixed-pitch propellers or twin Arneson surface drives	
<b>Generators – standard</b>	2 x 25kW @ 50Hz 230v single phase (Euro) 2 x 28kW @ 60Hz 120/240v single phase (US)	

## TWIN SHAFT VERSION

<b>Draft – (@ full load incl. props)</b>	2.12m	6'11"
<b>Displacement – (@ half load)</b>	64,700kg	142,340lb
<b>Maximum speed</b>	up to 37 knots*	
<b>Cruising speed</b>	up to 30 knots*	
<b>Range – (nautical miles)</b>	up to 350*	

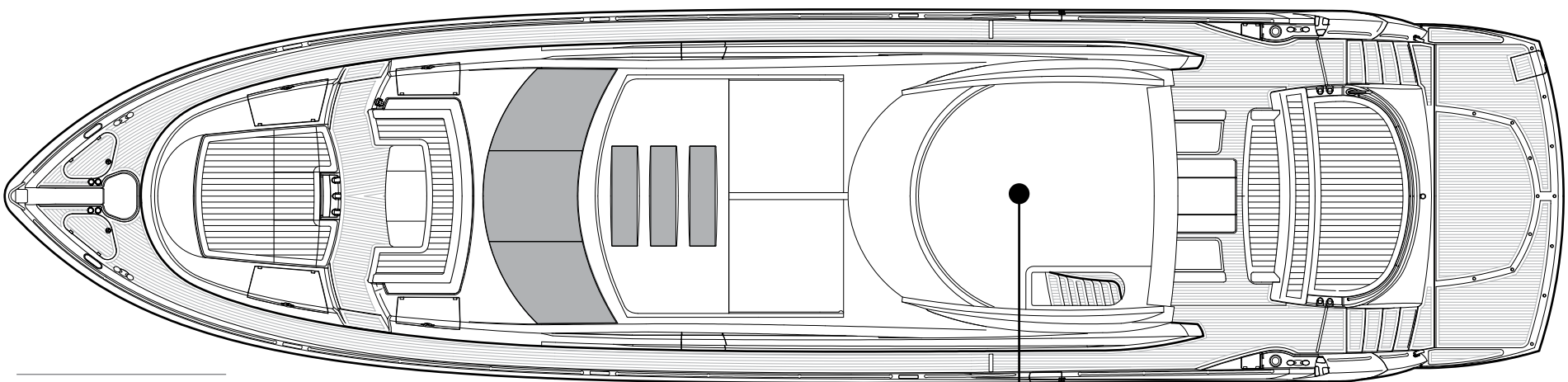
## TWIN ARNESON VERSION

<b>Draft – (@ full load incl. props)</b>	1.87m – 2.16m	6'2" – 7'1"
<b>Displacement – (@ half load)</b>	64,200kg	141,240lb
<b>Maximum speed</b>	up to 44 knots*	
<b>Cruising speed</b>	up to 35 knots*	
<b>Range – (nautical miles)</b>	up to 300*	

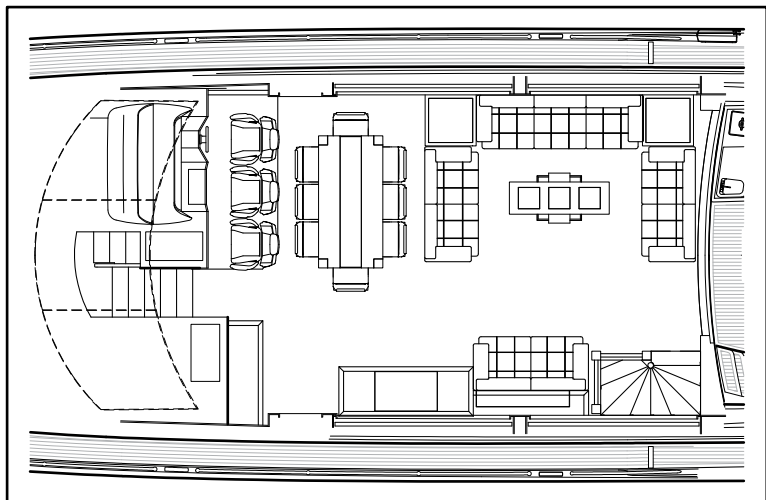
All principal characteristics and specifications are provisional and subject to final specification.

# GENERAL ARRANGEMENTS

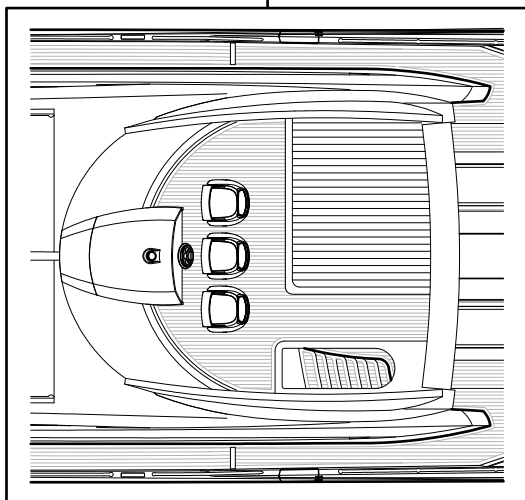
PREDATOR 84



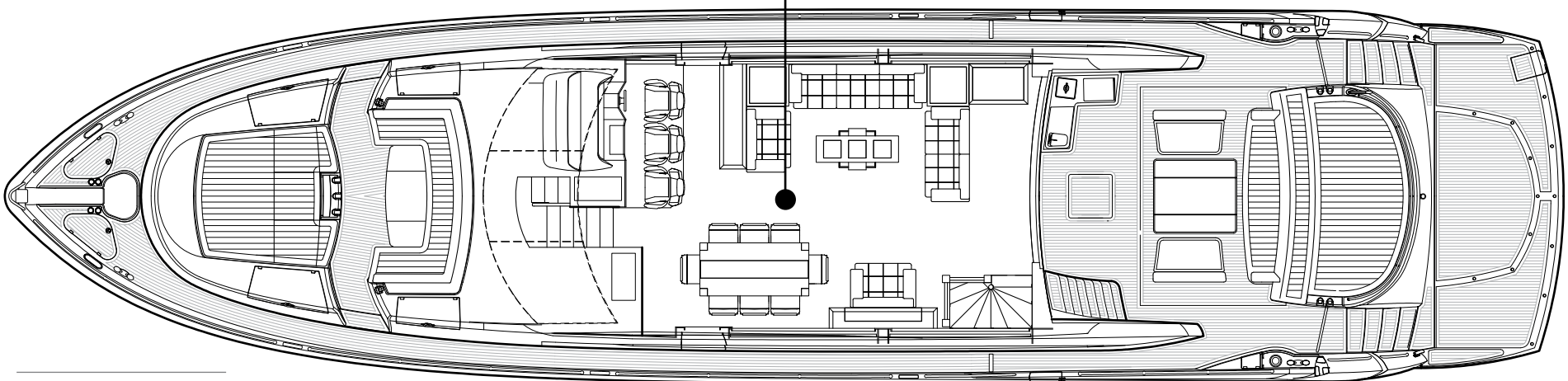
Flybridge



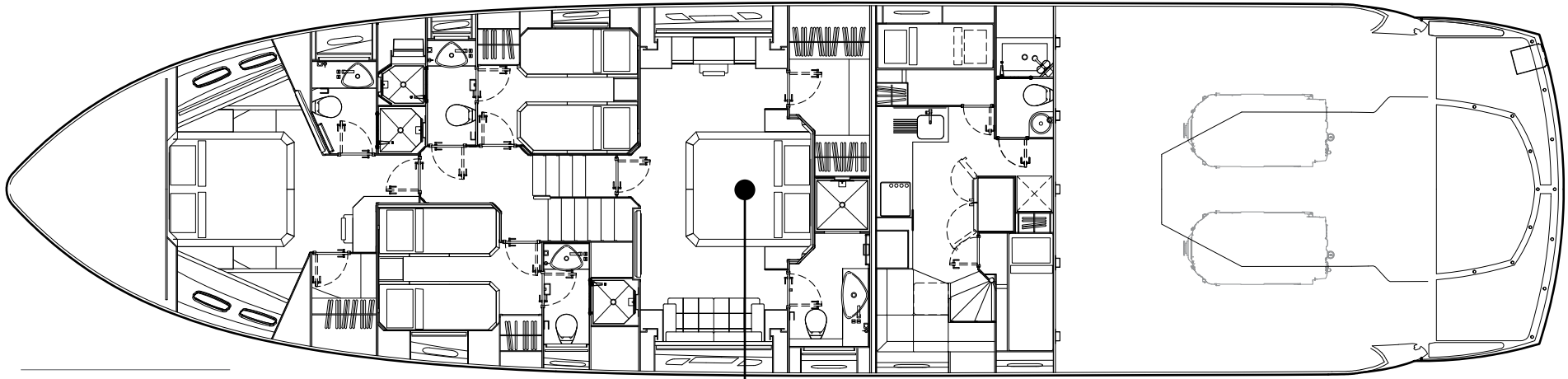
Optional main deck



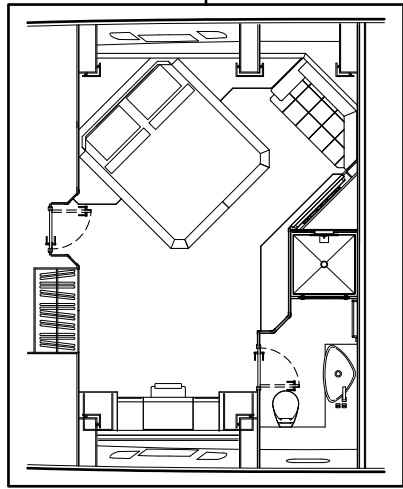
Helm option



Main deck



Lower deck



Lower deck option  
Angled master stateroom



## Awards

Sunseeker's success over the years is clearly underlined by the following list of national and international awards and achievements.

2011	Asia Boat Awards	Best brand presence in Asia	2004	Sydney Boat Show 2004	Best Overall Display
2011	European CEO corporate lifestyle awards	Best luxury brand	2004	Sydney Boat Show 2004	Best Marina Display
2011	Showboats Design Awards Florida	Naval architecture motor yacht 'Evil Zana' Predator 130.	2003	Australian Marine Awards	Manhattan 56, Award for Excellence
2010	World Superyacht Awards	Predator 130 'Evil Zana' – finalist	2003	Australian Marine Awards	Predator 68, Best Imported Non-Trailable Yacht
2010	Quintessentially Awards	Yacht charter of the year	2002	Entrepreneur of the Year Award	Robert Braithwaite MBE
2010	Sydney Boat Show	Boating Industry Association of NSW – Best Marina Display 2010	2001	Best Power Design Award	105 Yacht, The Superyacht Society
2010	Sydney Boat Show	Boating Industry Association of NSW – Best Overall Display	2001	Best Power Interior Award	105 Yacht, The Superyacht Society
2010	Asia Boating Awards	Predator 60 – Best Production Motor Yacht 51 to 80 feet	2001	President's Award	Southern California Marine Association
2009	Sydney Boat Show 2009	Display of Excellence	2000	Queen's Award for Enterprise	Continuous innovation and development
2009	Croatia Boat Show 2009	Predator 92 Sport – best in class	2000	The Times Exporter of the Year	Times Export Awards
2009	Croatia Boat Show 2009	30 Metre Yacht – best in class	2000	Robb Report Award	Best of the Best, Boating and Sailing
2009	Croatia Boat Show 2009	Best boat show stand	1999	Robb Report Award	Best of the Best, Boating and Sailing
2008	UK Motor Boat of the Year Awards 2008	Manhattan 60	1999	Motorboat of the Year	Predator 75, BT British Nautical Awards
2007	European Powerboat of the Year	Superhawk 43	1998	Superyacht Design Award	Manhattan 74, Superyacht Design Awards
2007	Asia Pacific Boating Awards	90 Yacht, Best of the Best	1998	Editor in Chief Awards	Yachts Magazine
2007	Modern Boating Magazine 2007	Portofino 47, Imported Powerboat of the Year	1997	Lifetime Achievement Award	Robert Braithwaite MBE, RYA Awards
2007	Australian Marine Industries Federation Awards	Predator 62, Imported Powerboat of the Year	1996	Motorcruiser of the Year Award	RYA British Nautical Awards
2007	Nominated by The Superyacht Society	37 Metre Yacht 'The Snapper'	1996	Exporter of the Year Award	DCCI Export Awards
2007	Queen's Award for Enterprise	International Trade	1995	Boat Builder of the Year Award	RYA/BMIF British Nautical Awards
2007	Robert Braithwaite is honoured with CBE	The Queen's Birthday Honours List	1994	Queen's Award for Export Achievement	Queen's Awards for Industry
2006	Nominated for three Superyacht Awards	Predator 108 'SHIVER'	1992	Best in the World Award	Renegade 60, Boating Magazine
2005	Australian Marine Industries Federation Awards	75 Yacht, Non-Trailable Boat Award	1992	Robert Braithwaite is honoured with MBE	The Queen's Birthday Honours List
2005	Australian Marine Industries Federation Awards	Portofino 46, Commendation	1990	Exporter of the Year	SW International Business Awards
2005	Modern Boating, Power Boat of the Year Awards	Predator 68, Imported Powerboat of the Year	1989	Queen's Award for Export Achievement	Queen's Awards for Industry
2005	Boats.com Marine Industry Web Awards	Manufacturers Category for www.sunseeker.com	1987	Queen's Award for Export Achievement	Queen's Awards for Industry

\*Every attempt has been made to give accurate information, but performance and range figures are estimates given as a guide only. Dirt or growth on the hull, tuning of the engines, size, make of engines fitted, damage to propellers, the temperature of the air and water, the weight of fuel, water, stores, number of people, propeller pitch, quality of fuel and other matters, can all affect a boat's performance and range. For these and other reasons we can give no performance, range or other guarantees, and neither such guarantees nor anything contained herein constitutes an offer of contract or any representation or agreement, or may otherwise be relied upon. The photographs and artist's impressions in this brochure are from existing models in the Sunseeker range. There may be items shown in these photographs and artist's impressions that are not included in the standard inventory of the models shown. Specifications contained in this brochure are provisional only and should not be relied upon and may refer to models only intended for sale in a particular territory and not generally. No guarantee is given that any model will be available in any territory; however by contacting us we can advise you of models that are likely to be available in each territory. In some examples herein we have referred to measurements, specifications or other details applicable to a particular territory and no guarantee is given that these are applicable to your territory. Actual specifications will be provided when a sales order or enquiry is placed with us or our approved Sunseeker distributor. Specifications for models sold in different markets may vary and specifications and models may be changed or withdrawn at any time without prior notice. The individual specification for each vessel will be agreed as part of the sale contract between the purchaser and the Sunseeker distributor. Distributors are independently owned and operated entities, and therefore Sunseeker distributors are not owned by Sunseeker International Limited or any subsidiaries or other related entity of this company nor are they their agents. Therefore they have absolutely no authority to commit Sunseeker International Limited, or any subsidiary or other related entities of Sunseeker International Limited to any pledge, contract or agreement in any form or by any means unless first accepted in writing by Sunseeker International Limited. For ease of reference we have, in some cases, referred to "we" or "Sunseeker" and these terms should be taken to mean Sunseeker International Limited.

Designed, written and produced by Marketing Matters Limited. Printed in the EU. December 2011. ©Sunseeker International.



Sunseeker International Limited has CE Approval which is compulsory for all boats with a LOA of 24m and below when sold in the EU.



QUINTESSENTIALLY BRITISH