

PREDATOR 130







PREDATOR 130

PERFORMANCE MOTORYACHT

Style: Performance motoryacht

Accommodation: Up to 10 guests and 8 crew members

Tender and toys: Garaged

Drives: Shafts

Performance: Up to 27 knots

The largest in the Predator line, the 130 presents a spectacular, sporty, two-and-a-half-deck profile reflecting this boat's prowess. Fast, agile in turns and stable in even the bigger seas, the Sunseeker trademark performance is truly evident. And so is the personal comfort.

Wood grains from walnut to wenge and materials from granite to glass are all owner specified, as is the general arrangement. The principal plan is full beam master suite forward on the main deck, with four guest suites amidships below, but almost all things are customisable. One owner installing, for example, a machine filled gym, another a complete one-off skydeck saloon.

For privacy, in big boat fashion there's a crew separation scheme with guest access to stern and starboard, crew to port. Great attention is paid to noise and vibration attenuation, with buffer zones between guest accommodation and machinery spaces. Standard drive option is twin 12-cylinder MTU 4000s on conventional shafts and the hull is optimised for low as well as high speeds.

STANDARD SPECIFICATION

1 Flybridge deck

Steps leading to/from main deck aft cockpit and wheelhouse
Seating areas, each with fold-out table
8 x freestanding chairs
Radar arch structure
Low level spotlights
Non-slip deck finish
Four pairs of marine speakers
Spa tub
Raised sunpad
Wetbar with sink and storage
Icemaker
Fridge
Bar stools
Griddle
Stainless steel safety rails

2 Flybridge helm

Two helm seats
Two additional seats on port side
Main engines single lever electronic controls
Engine instrumentation
Trim tab control
Bow thruster control
Magnetic compass
Radar display
Chart plotter display
GPS
Autopilot
Depth and speed display
VHF with DSC
Searchlight control

3 Forward deck

Access via stairs leading up from main deck level on port and starboard sides
U-shaped seating area with table on electrically operated pedestal
Low level sunpad with adjustable headrests
Low level spotlights
Two pairs marine speakers
Teak deck finish around seating and sunpad deck area
Teak steps to forepeak
Forepeak area with non-slip deck finish
Stainless steel safety rails

4 Main deck aft cockpit and bathing platform

Seating area
Dining table
Teak laid deck
Access to engine room
High level spotlights
Two pairs marine speakers
Wetbar with sink and storage
Icemaker
Fridge
Bar stools
Sliding patio doors to main deck saloon area
Staircase leading to flybridge
Steps leading to bathing platform on port and starboard sides
Hydraulic door leading to stern garage
Hydraulic bathing platform
Stainless steel safety rails

5 Main deck saloon and dining

Aft outboard console units
Sofa seating area
Coffee table
Television on rise and fall and AV system
Dining table
Leather upholstered chairs x 10
Sideboards with storage
Chinaware, glassware and cutlery – 12 settings
Table lamps
Air conditioning
Overhead lighting with dimmers
AC sockets
Telephone point
Data point (RJ45)
Fitted carpet
Side windows with blinds
Lacquered bulkheads
Access doors forward to galley (port side) and starboard side lobby

6 Main deck starboard side entrance lobby

Overhead lighting
AC socket
Fitted carpet
Lacquered bulkheads
Staircase to raised wheelhouse and lower deck
Watertight side door leading to starboard side deck
Doors to deck saloon/dining area, main deck day head, master stateroom and crew quarters/galley

7 Main deck day head

Toilet
Washbasin
Taps
Overhead lighting
Extractor fan
Soap dispenser
Toilet roll holder
Towel rail
Toilet brush and holder
Stone floor
Stone vanity top
Mirror
Robe hook
Side window with venetian blind
Lacquered bulkheads

8 Main deck master stateroom

Double berth with storage in base
Sprung mattress
Bedside cabinets with storage
Dressing table
Low back chair for dressing table
Freestanding chairs x 2
Television and AV system
Mini bar fridge and glassware
(2 x champagne and 2 x highball) with stowage
Bedside lights
Overhead lighting with dimmers
Table lamps
AC sockets
Telephone point
Data point (RJ45)
Air conditioning
Fitted carpet
Side windows with blinds
Lacquered bulkheads
Doors to walk-in wardrobe, en suite and lobby

9 Main deck walk-in wardrobe

Hanging rails
Drawers for storage
Safe deposit box (4 brick)
Overhead lighting
AC socket
Air conditioning outlet
Fitted carpet
Shelving

10 Main deck master en suite

Washbasins x 2
Shower cubicle with door
Mirrors
Taps
Storage lockers and drawers
Soap dispensers
Towel rings
Robe hooks
Overhead lighting
Razor sockets
Extractor fan
Stone flooring
Stone vanity top
Escape hatch
Side window with venetian blind
Lacquered bulkheads

11 Main deck master en suite toilet room

Toilet
Bidet
Washbasin
Taps
Mirrors
Soap dispenser
Toilet roll holder
Towel rail
Toilet brush and holder
Robe hooks
Overhead lighting

Extractor fan
Razor socket
Stone flooring
Stone vanity top
Side window with venetian blind
Lacquered bulkheads
Door to en suite

12 Lower deck lobby

Stairs leading from main deck
AC socket
Overhead lighting
Fitted carpet
Lacquered bulkheads
Console unit
Feature wall lights
Doors to guest accommodation

13 Aft starboard double guest stateroom

Double berth with storage in base
Sprung mattress
Bedside cabinets
Storage units
Dressing table with lift up lid
Piano stool for dressing table
Wardrobes with hanging rail and lighting
Safe deposit box
Television and AV system
Bedside lights
AC sockets
Telephone point
Data point (RJ45)
Overhead lighting
Air conditioning
Fitted carpet
Side windows with storm shutters and blind
Mirrors
Lacquered bulkheads
Doors to lobby and en suite

14 Aft starboard double en suite

Toilet
Washbasin x 1
Taps
Lockers and shelves
Razor socket
Extractor fan
Overhead lighting
Shower cubicle with door
Air conditioning outlet
Soap dispenser
Toilet roll holder
Towel rails x 2
Toothbrush holder
Robe hooks
Toilet brush and holder
Stone vanity top
Stone flooring
Mirrors
Porthole with storm shutter and venetian blind
Lacquered bulkheads

15 Aft port double guest stateroom

Double berth with storage in base
Sprung mattress
Bedside cabinets
Storage units
Dressing table with lift up lid
Piano stool for dressing table
Wardrobes with hanging rail and lighting
Safe deposit box
Television and AV system
Bedside lights
AC sockets
Telephone point
Data point (RJ45)
Overhead lighting
Air conditioning
Fitted carpet
Side windows with storm shutters and blind
Mirrors
Lacquered bulkheads
Doors to lobby and en suite

16 Aft port double en suite

Toilet
Washbasin x 1
Taps
Lockers and shelves
Razor socket
Extractor fan
Overhead lighting
Shower cubicle with door
Air conditioning outlet
Soap dispenser
Toilet roll holder
Towel rails x 2
Toothbrush holder
Robe hooks
Toilet brush and holder
Stone vanity top
Stone flooring
Mirrors
Porthole with storm shutter and venetian blind
Lacquered bulkheads

17 Starboard forward twin guest stateroom

Twin berths with storage in base
Sprung mattresses
Bedside cabinet
Wardrobe with hanging rail and lighting
Safe deposit box
Television and AV system
Bedside lights
AC sockets
Telephone point
Data point (RJ45)
Overhead lighting
Fitted carpet
Side windows with storm shutters and blind
Mirrors
Lacquered bulkheads
Doors to lobby and en suite

18 Starboard forward twin en suite

Toilet
Washbasin x 1
Taps
Lockers and shelves
Razor socket
Extractor fan
Overhead lighting
Shower cubicle with door
Air conditioning outlet
Soap dispenser
Toilet roll holder
Towel rails
Toothbrush holders
Robe hooks
Toilet brush and holder
Stone vanity top
Stone flooring
Mirrors
Porthole with storm shutter and venetian blind
Lacquered bulkheads

19 Port forward twin guest stateroom

Twin berths with storage in base
Sprung mattresses
Bedside cabinet
Wardrobe with hanging rail and lighting
Safe deposit box
Television and AV system
Bedside lights
AC sockets
Telephone point
Data point (RJ45)
Overhead lighting
Air conditioning
Fitted carpet
Side windows with storm shutters and blind
Mirrors
Lacquered bulkheads
Doors to lobby and en suite

20 Port forward twin en suite

Toilet
Washbasin x 1
Taps
Lockers and shelves
Razor socket
Extractor fan
Overhead lighting
Shower cubicle with door
Air conditioning outlet
Soap dispenser
Toilet roll holder
Towel rails
Toothbrush holders
Robe hooks
Toilet brush and holder
Stone vanity top
Stone flooring
Mirrors
Porthole with storm shutter and venetian blind
Lacquered bulkheads

21 Raised wheelhouse

Access stairs from starboard side lobby
Two helm seats
Chart table area with storage
Main engines single lever electronic controls
Engine monitoring displays
Trim tab control
Bow thruster control
Satellite compass display
Radar with PC display
Chart plotter with PC display
GPS
Autopilot
Depth and speed display
VHF with DSC
Searchlight control
Monitoring of boat systems via MPA touchscreen
Windscreen wipers with glass washing system
Demisting fans for windscreen
Telephone point
AC sockets
Data point (RJ45)
Air conditioning
Chart light
Overhead lighting
Clock and barometer
Radio/CD player with two speakers
Teak floor
Lacquered bulkheads
Sofa seating area
Table for seating area
Access stairs to flybridge deck

22 Galley

Entrance from main deck dining area and main deck crew lobby
Storage cabinets and overhead lockers
Sinks
Taps
Ceramic electric hobs
Extractor fan ducted externally
Coffee maker (free standing)
Electric double oven
Microwave
Full height fridges x 2
Full height freezer x 1
Dishwasher
Wine cooler
Icemaker
Overhead lighting
CD/radio with two speakers
Air conditioning
AC sockets
Telephone point
Data point (RJ45)
Non-slip safety flooring
Stone worktop
Side windows with venetian blinds
Port sidedeck door access
Door to crew lobby

23 Main deck crew lobby

Non-slip safety flooring
Overhead lighting
Access to technical area below wheelhouse
Lacquered bulkheads
Doors to the galley and side entrance lobby
Stairs to crew quarters

24 Crew mess

Fixed dinette table with sofa
Storage cabinets
Television and AV system
Undercounter fridge
Slimline dishwasher
Microwave
Telephone point
AC sockets
Overhead lighting
Sink with tap
Worktop
Chinaware, glassware and cutlery for 7
Portholes with storm shutters and blinds
Laminate bulkhead finish
Data point (RJ45)
Air conditioning
Non-slip safety flooring
Doors leading to crew cabins

25 Captain's cabin (aft port crew cabin)

Single berth
Foam mattress
Bedside unit
Wardrobes
Mirror
Television and AV System
Bedside light
Overhead lighting
Air conditioning
AC socket
Telephone point
Data point (RJ45)
Desk
Stool for desk
Porthole with storm shutter and curtains
Safety flooring
Escape hatch

26 Captain's en suite (aft port en suite)

Toilet
Washbasin
Shower
Storage locker
Extractor fan
Mirror
Razor socket
Overhead lighting
Tap
Soap dish
Toilet roll holder

27 Aft starboard crew cabin

Twin bunk berths
Foam mattresses
Wardrobe
Mirror
CD/radio with two speakers
Bedside lights
Overhead lighting
Air conditioning
AC socket
Telephone point
Data point (RJ45)
Safety flooring
Porthole with storm shutter and curtains

28 Aft starboard crew en suite

Toilet
Washbasin
Shower
Storage locker
Extractor fan
Mirror
Razor socket
Overhead lighting
Tap
Soap dish
Toilet roll holder

29 Mid port crew cabin

Twin bunk berths
Foam mattresses
Wardrobe
Mirror
CD/radio with two speakers
Bedside lights
Overhead lighting
Air conditioning
AC socket
Telephone point
Data point (RJ45)
Safety flooring
Porthole with storm shutter and curtains

30 Mid port crew en suite

Toilet
Washbasin
Shower
Storage locker
Extractor fan
Mirror
Razor socket
Overhead lighting
Tap
Soap dish
Toilet roll holder

31 Forward port crew cabin

Twin bunk berths
Foam mattresses
Wardrobe
Mirror
CD/radio with two speakers
Bedside lights
Overhead lighting
Air conditioning
AC socket
Telephone point
Data point (RJ45)
Safety flooring
Porthole with storm shutter and curtains

32 Forward port crew en suite

Toilet
Washbasin
Shower
Storage locker
Extractor fan
Mirror
Razor socket
Overhead lighting
Tap
Soap dish
Toilet roll holder

33 Stern laundry

Sink with tap
Washing machine
Tumble dryer
Overhead lighting
AC socket
Telephone point
Non-slip safety flooring

34 Boat covers

Flybridge console cover
Flybridge individual helmseat covers
Flybridge forward port side individual seat covers
Flybridge bar stool covers
Flybridge seating area overall covers
Flybridge table covers
Flybridge sunpad cover
Flybridge spa tub cover
Forward deck overall seating cover
Forward deck table cover
Forward deck sunpad cover
Aft cockpit overall seating cover
Aft cockpit table cover
Aft cockpit bar stool covers
Wheelhouse windscreen cover
Wheelhouse individual helm seat covers

PRINCIPAL CHARACTERISTICS

PREDATOR 130

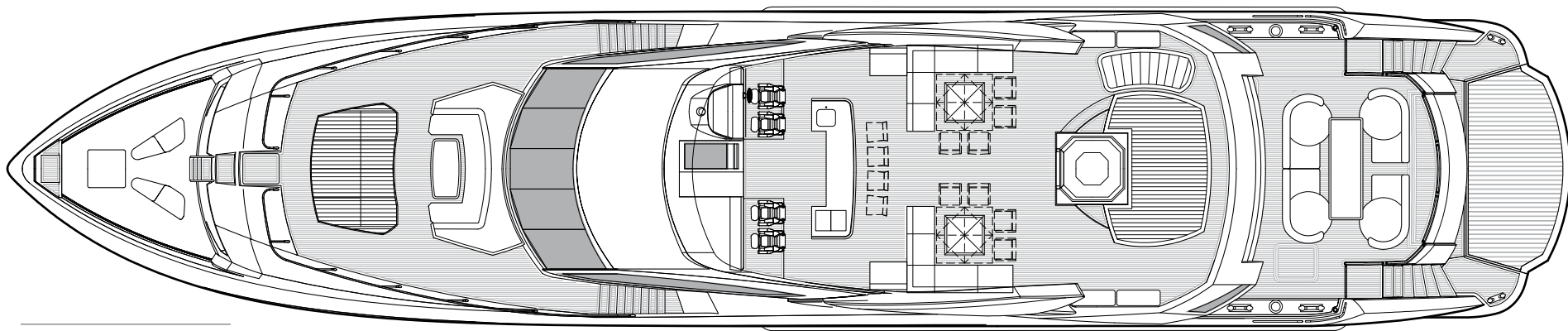
PRINCIPAL CHARACTERISTICS

Length overall	39.12m	128'4"
Beam maximum – (inc. topside fender strakes)	8.10m	26'7"
Draft – (@ full load)	2.75m	9'0"
Height from waterline to top of arch	7.24m	23'9"
Displacement – (@ normal half load)	180,600kg	397,320lb
Engine options	up to 7020 PS	
Propulsion	Twin fixed-pitch submerged propellers in semi-recessed tunnels	
Generators	2 x 70kW 400/230v 3 phase 50Hz (Euro) 2 x 80kW 400/230v 3 phase 60Hz (US)	
Standard fuel load capacity	22,200 litres	5,862 US gal.
Optional overload tank capacity	4,600 litres	1,215 US gal.
Total long range capacity (with optional tank)	26,800 litres	7,077 US gal.
Fresh-water capacity	4,950 litres	1,307 US gal.
Black-water capacity	1,450 litres	383 US gal.
Grey-water capacity	1,350 litres	379 US gal.
Maximum speed	up to 27 knots	
Range	up to 1500 nautical miles (10-12 knots @ half load)	

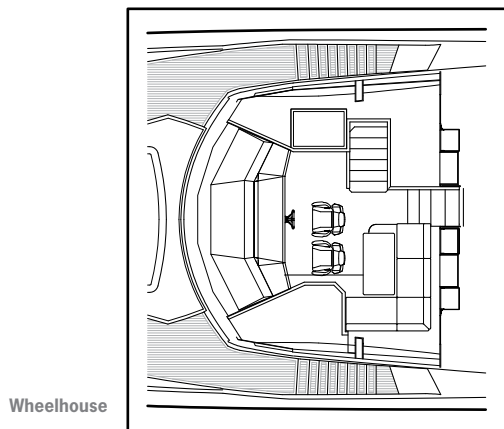
All principal characteristics and specifications are provisional and subject to final specification.

GENERAL ARRANGEMENTS

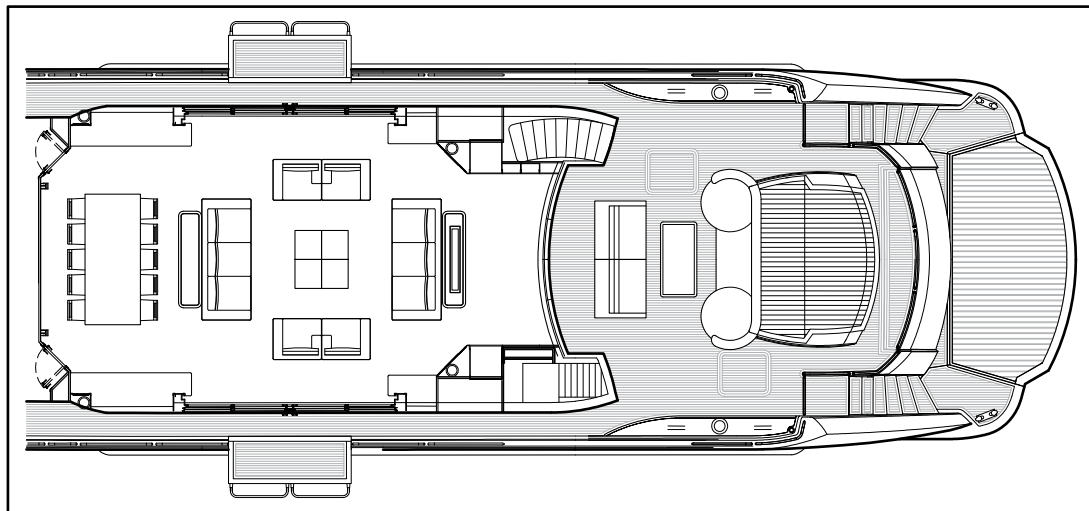
PREDATOR 130



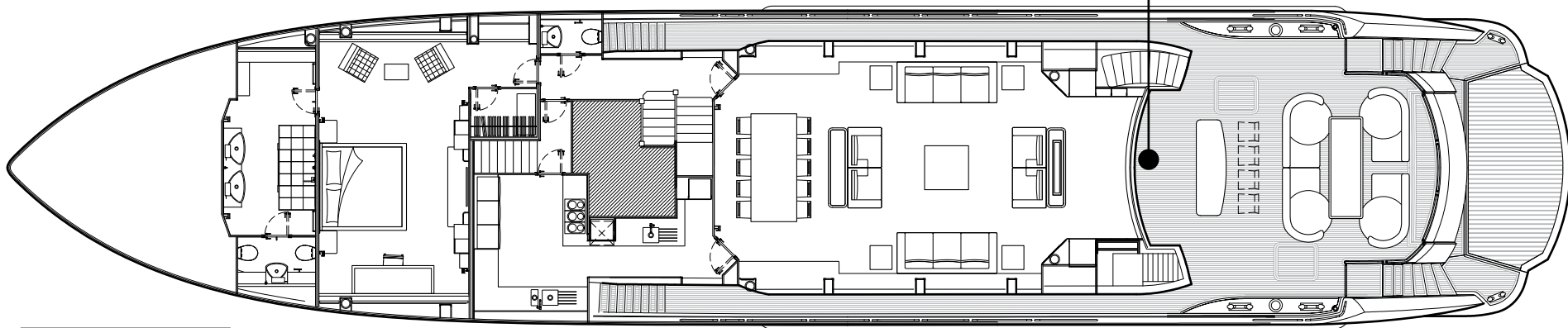
Flybridge deck
Shown with optional teak decking



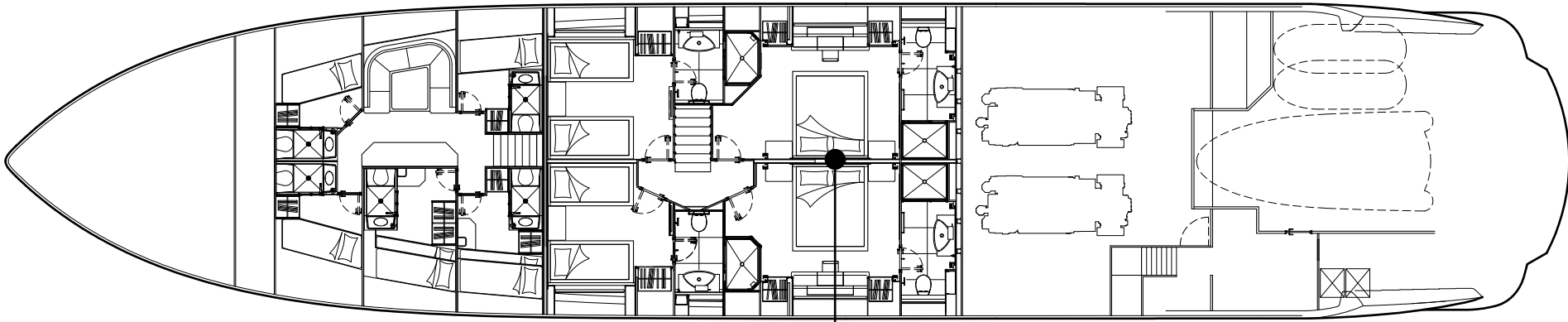
Wheelhouse



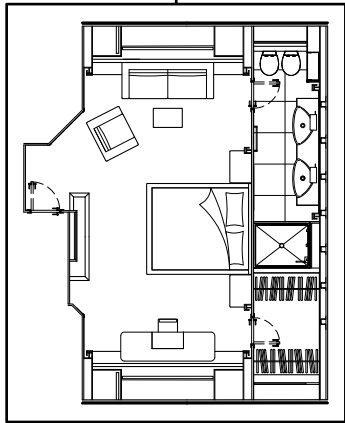
Main deck option
Saloon shown with 2x bulwark balconies and 2x patio doors
and aft cockpit sun pad



Main deck



Lower deck



Lower deck option
VIP cabin



Awards

Sunseeker's success over the years is clearly underlined by the following list of national and international awards and achievements.

2011	Asia Boat Awards	Best brand presence in Asia	2004	Sydney Boat Show 2004	Best Overall Display
2011	European CEO corporate lifestyle awards	Best luxury brand	2004	Sydney Boat Show 2004	Best Marina Display
2011	Showboats Design Awards Florida	Naval architecture motor yacht 'Evil Zana' Predator 130.	2003	Australian Marine Awards	Manhattan 56, Award for Excellence
2010	World Superyacht Awards	Predator 130 'Evil Zana' – finalist	2003	Australian Marine Awards	Predator 68, Best Imported Non-Trailable Yacht
2010	Quintessentially Awards	Yacht charter of the year	2002	Entrepreneur of the Year Award	Robert Braithwaite MBE
2010	Sydney Boat Show	Boating Industry Association of NSW – Best Marina Display 2010	2001	Best Power Design Award	105 Yacht, The Superyacht Society
2010	Sydney Boat Show	Boating Industry Association of NSW – Best Overall Display	2001	Best Power Interior Award	105 Yacht, The Superyacht Society
2010	Asia Boating Awards	Predator 60 – Best Production Motor Yacht 51 to 80 feet	2001	President's Award	Southern California Marine Association
2009	Sydney Boat Show 2009	Display of Excellence	2000	Queen's Award for Enterprise	Continuous innovation and development
2009	Croatia Boat Show 2009	Predator 92 Sport – best in class	2000	The Times Exporter of the Year	Times Export Awards
2009	Croatia Boat Show 2009	30 Metre Yacht – best in class	2000	Robb Report Award	Best of the Best, Boating and Sailing
2009	Croatia Boat Show 2009	Best boat show stand	1999	Robb Report Award	Best of the Best, Boating and Sailing
2008	UK Motor Boat of the Year Awards 2008	Manhattan 60	1999	Motorboat of the Year	Predator 75, BT British Nautical Awards
2007	European Powerboat of the Year	Superhawk 43	1998	Superyacht Design Award	Manhattan 74, Superyacht Design Awards
2007	Asia Pacific Boating Awards	90 Yacht, Best of the Best	1998	Editor in Chief Awards	Yachts Magazine
2007	Modern Boating Magazine 2007	Portofino 47, Imported Powerboat of the Year	1997	Lifetime Achievement Award	Robert Braithwaite MBE, RYA Awards
2007	Australian Marine Industries Federation Awards	Predator 62, Imported Powerboat of the Year	1996	Motorcruiser of the Year Award	RYA British Nautical Awards
2007	Nominated by The Superyacht Society	37 Metre Yacht 'The Snapper'	1996	Exporter of the Year Award	DCCI Export Awards
2007	Queen's Award for Enterprise	International Trade	1995	Boat Builder of the Year Award	RYA/BMIF British Nautical Awards
2007	Robert Braithwaite is honoured with CBE	The Queen's Birthday Honours List	1994	Queen's Award for Export Achievement	Queen's Awards for Industry
2006	Nominated for three Superyacht Awards	Predator 108 'SHIVER'	1992	Best in the World Award	Renegade 60, Boating Magazine
2005	Australian Marine Industries Federation Awards	75 Yacht, Non-Trailable Boat Award	1992	Robert Braithwaite is honoured with MBE	The Queen's Birthday Honours List
2005	Australian Marine Industries Federation Awards	Portofino 46, Commendation	1990	Exporter of the Year	SW International Business Awards
2005	Modern Boating, Power Boat of the Year Awards	Predator 68, Imported Powerboat of the Year	1989	Queen's Award for Export Achievement	Queen's Awards for Industry
2005	Boats.com Marine Industry Web Awards	Manufacturers Category for www.sunseeker.com	1987	Queen's Award for Export Achievement	Queen's Awards for Industry



Sunseeker International Limited has CE Approval which is compulsory for all boats with a LOA of 24m and below when sold in the EU.



QUINTESSENTIALLY BRITISH

*Every attempt has been made to give accurate information, but performance and range figures are estimates given as a guide only. Dirt or growth on the hull, tuning of the engines, size, make of engines fitted, damage to propellers, the temperature of the air and water, the weight of fuel, water, stores, number of people, propeller pitch, quality of fuel and other matters, can all affect a boat's performance and range. For these and other reasons we can give no performance, range or other guarantees, and neither such guarantees nor anything contained herein constitutes an offer of contract or any representation or agreement, or may otherwise be relied upon. The photographs and artist's impressions in this brochure are from existing models in the Sunseeker range. There may be items shown in these photographs and artist's impressions that are not included in the standard inventory of the models shown. Specifications contained in this brochure are provisional only and should not be relied upon and may refer to models only intended for sale in a particular territory and not generally. No guarantee is given that any model will be available in any territory; however by contacting us we can advise you of models that are likely to be available in each territory. In some examples herein we have referred to measurements, specifications or other details applicable to a particular territory and no guarantee is given that these are applicable to your territory. Actual specifications will be provided when a sales order or enquiry is placed with us or our approved Sunseeker distributor. Specifications for models sold in different markets may vary and specifications and models may be changed or withdrawn at any time without prior notice. The individual specification for each vessel will be agreed as part of the sale contract between the purchaser and the Sunseeker distributor. Distributors are independently owned and operated entities, and therefore Sunseeker distributors are not owned by Sunseeker International Limited or any subsidiaries or other related entity of this company nor are they their agents. Therefore they have absolutely no authority to commit Sunseeker International Limited, or any subsidiary or other related entities of Sunseeker International Limited to any pledge, contract or agreement in any form or by any means unless first accepted in writing by Sunseeker International Limited. For ease of reference we have, in some cases, referred to "we" or "Sunseeker" and these terms should be taken to mean Sunseeker International Limited.