

MANHATTAN 73







# MANHATTAN 73

FLYBRIDGE MOTORYACHT

---

**Style:** Flybridge motoryacht

**Accommodation:** Up to 8 guests and 2 crew members

**Tender and toys:** Platform

**Drives:** Shafts

**Performance:** Up to 34 knots

---

As the mid-range craft increasingly borrow from the larger Yachts, the Manhattan 73 demonstrates the point perfectly, her deck ringed by ample side decks protected by bulwarks and large diameter stainless steel handrails. Her flybridge, too, is long, extending right over the aft cockpit for shade, and this year sees the introduction of an optional hard top, too, of carbon fibre with opening centre section for climate control above the dining and two seating areas.

With a big ship pantograph door siding the two race-seated helm station, access for owner operator or crew is expedient and for the guest party the seamless flow between aft cockpit and vast single level saloon and dining area encourages excellent sociability. The galley is on the main deck, too, at the head of the stairway leading to the lower deck and, a most unusual achievement for this length, the three full double, and one twin, suites.

## STANDARD SPECIFICATION

**1 Construction**

Hand-laid GRP  
Gel coat including stripes  
Vinylester skin coat with powderbound mat  
Stitched multi-axial reinforced single skin bottom  
Balsa cored hull topsides  
Cored deck and superstructure  
Hull stiffened with longitudinal stringers supported by transverse bulkheads and floors

**2 Deck**

Fittings all in stainless steel  
8 stainless steel deck cleats  
Pulpit and cockpit rails  
Stainless steel fendering with rubber insert  
Stainless steel bow roller with anchor stop  
Stainless steel bow plate  
Delta anchor and 60m chain (galvanised)  
Electric bow winch and capstan with deck, cockpit and flybridge controls 24VDC  
Chain locker – fender stowage  
Curved safety glass windscreen  
3 x Pantograph windscreen wipers 24VDC and washers  
Fuel fillers port and starboard  
Fresh water filler  
IMCO navigation lights  
Remote spotlight 24VDC  
Ensign staff and socket  
Fender tie bar under anchor locker lid  
Fore deck storage lockers  
Fore deck seating  
8 fenders  
6 warps

**3 Bathing platform**

Hydraulic lifting platform  
Teak-laid bathing platform and steps  
Hot and cold swimming shower  
Fresh water marina connection  
Dockside mains shore power connection  
Stainless steel swimming ladder

**4 Flybridge helm position**

Access hatch and stairs to cockpit  
Self draining  
Acrylic deflecting spray screen  
Twin helm seats  
Hydraulic steering  
Duplicate engine controls and instrumentation  
Duplicate autopilot controls  
Second station VHF  
Compass  
Rudder indicator  
Trim tab control  
Radio/CD remote control  
Two seating groups  
Folding table  
Upholstered sunbathing area forward  
Instrument cover  
Stainless steel guard rails and grab rails  
Glass holders either side of sunbed and console  
Wetbar with hot and cold water and ice maker  
Cockpit speakers  
Low-level flybridge lights 24VDC  
Lighting under radar arch 24VDC

**5 Aft cockpit**

Teak-laid cockpit floor  
Self draining  
Moulded staircase to flybridge  
Stern seating  
Stern safety gates  
Engine room access hatch  
2 x stern capstan winches 24VDC and fairleads  
Rope lockers  
Cockpit speakers  
Overhead cockpit lights 24VDC  
Low-level courtesy lights aft cockpit 24VDC

**6 Main helm console**

Port-side observation area seating group  
Upholstered helm seats  
Console with walnut type fascia  
Leather rimmed chrome steering wheel  
Hydraulic power steering  
Radar/chartplotter with GPS  
Autopilot  
Analogue and digital engine instrumentation  
Electronic speed and depth sounder  
Rudder indicator  
Fresh-water gauge and fuel gauge  
VHF radio with DSC  
Trim tab controls  
Compass  
Horn  
Switch panels  
Windscreen wipers with washers  
Demisters  
Cigar lighter  
Glass holders  
Double AC socket  
Hand-held fire extinguisher  
Side opening door to side deck

**7 Saloon**

Flush stainless steel glazed sliding door to aft cockpit  
Air conditioning  
Flatscreen television (40")  
Radio/CD/DVD cinema surround system  
Coffee table  
Halogen overhead lighting 24VDC  
2 x double AC sockets  
Scatter cushions  
Choice of lacquered interior finishes and veneers  
Fitted carpet

**8 Dining**

Large dining area with formal dining table and 8 chairs  
Access stairs to the lower decks  
Halogen overhead lighting 24VDC  
2 x double AC sockets  
Fitted carpet

**9 Galley**

American-style electric refrigerator and freezer with chilled water and ice dispenser  
Ceramic hob  
Microwave oven  
Stainless steel sink  
Hot and cold water  
Rubbish bin  
8 place crockery and cutlery set  
2 x double AC sockets  
Hand-held fire extinguisher  
Dishwasher  
First Aid kit

**10 VIP forward stateroom**

Double berth  
Drawers and storage beneath  
Wardrobe  
Dressing table with mirror and stool  
Halogen overhead lights 24VDC  
2 x reading lights 24VDC  
2 x panoramic windows with opening ports and curtains  
Deck hatch with screen  
Two double AC sockets  
Flatscreen television (32")  
Radio/CD/DVD player  
Air conditioning  
Door to en suite toilet/shower  
Fitted carpet

**11 VIP en suite shower room**

Electric toilet  
Wash basin, taps and soap dispenser  
Toothbrush and glass holder  
Towel ring and towels  
Mirrored vanity unit  
Separate shower compartment  
Extractor fan  
Halogen overhead light 24VDC  
Opening porthole with mosquito screen and blind  
Razor socket 240/110v

**12 Aft master stateroom**

Two panoramic windows with opening ports and curtains  
Double berth  
Under berth drawers and storage  
Bedside cabinets  
Fixed settee  
Dressing table with mirror and stool  
Lockers and drawers  
Halogen overhead lights 24VDC  
2 x reading lights 24VDC  
2 x double AC socket  
Flatscreen television (32")  
Radio/CD/DVD player  
Air conditioning  
Walk-in wardrobe  
Door to en suite toilet/shower  
Fitted carpet

**13 Master en suite shower room**

Electric toilet  
Two wash basin, taps and soap dispenser  
Toothbrush and glass holder  
Towel ring and towels  
Mirrored vanity unit  
Separate shower compartment  
Extractor fan  
Halogen overhead light 24VDC  
Opening porthole with mosquito screen and blind  
Razor socket 240/110v

**14 Starboard guest cabin**

Double berth  
Drawers and storage beneath  
Bedside units  
2 x reading lights 24VDC  
Vanity unit and Stool  
Wardrobe with Mirrored door  
Halogen overhead lights 24VDC  
Opening porthole with mosquito screen and curtains  
Two double AC sockets  
Air conditioning  
Flatscreen television (19")  
Radio/CD/DVD player  
En suite shower room

**15 Toilet/shower room**

Electric toilet  
Wash basin, taps and soap dispenser  
Toothbrush and glass holder  
Towel ring and towels  
Mirrored vanity unit  
Separate shower compartment  
Extractor fan  
Halogen overhead light 24VDC  
Opening porthole with mosquito screen and blind  
Razor socket 240/110v

**16 Port guest cabin**

2 single berths  
Under-berth stowage  
2 x reading lights 24VDC  
Wardrobe with mirrored door  
Halogen overhead lights 24VDC  
Opening porthole with mosquito screen and curtains  
Double AC socket  
Air conditioning  
Flatscreen television (19")  
Radio/CD/DVD player

**17 Crew cabin**

Entrance door from rear cockpit  
Two singles (or double berth as option)  
Wardrobe with mirrored door  
Storage lockers  
Stern panoramic window with curtains  
Opening porthole with mosquito screen and curtain  
Halogen overhead lighting 24VDC  
Reading lights 24VDC  
Double AC socket  
Air conditioning  
Washer dryer  
Separate shower room with hot and cold water  
Electric toilet and holding tank  
Shaver socket 240/110v

**18 Engine compartment and ancillaries**

Twin engines  
Soundproofing throughout engine room  
2 x aluminium cross balanced fuel tanks with electric sending unit  
Separate fuel filters/water separators  
Automatic fire extinguishers  
Engine room and forward bilge flood alarms  
Automatic bilge pumps  
Automatic flood pumps  
4 x extractor fans 24VDC  
Manual bilge pump

**19 Electrical system**

Slow speed generator with underwater silent exhaust and sound box  
Shore power dockside connection  
Galvanic isolator  
24VDC and 12VDC electrical system with full circuit breaker protection  
8 x engine batteries 24VDC circuit  
8 x domestic batteries 24VDC circuit  
4 x generator batteries 12VDC circuit  
Alternator split charging system  
Remote battery switches controlled from locker in cockpit  
Battery charger for 24VDC circuits  
Battery charger for 12VDC circuits  
AC Water heater  
AC sockets throughout the boat  
24VDC hand light and cable

**20 Underwater gear**

Direct shaft drive through tunnels  
5-blade nickel aluminium bronze propellers  
Bronze P-brackets  
Temet 25 stainless steel propeller shafts  
Dripless shaft logs with spare seals  
High-performance bronze rudders and struts  
Seawater strainers x 2 main engines/  
1 x generator  
Seacocks on all underwater fittings  
Full cathodic bonding system to zinc anodes  
Bow thruster 24VDC  
Stainless steel hydraulic trim tabs 24VDC

**21 Systems**

Hydraulic 24VDC power steering  
24VDC electric toilet system  
Aluminium fresh-water tank with electric sending unit  
24VDC fresh-water pressure system  
Hot-water tank

**22 Miscellaneous**

Tool kit  
Boat hook  
6 x mooring warps  
8 x Fenders  
8 sets towels  
Vacuum cleaner  
US specification includes:  
US specification appliances

**Optional extras:**

Hydraulic telescopic passerelle  
Teak flybridge  
Teak side decks  
Teak lower cockpit table  
Lower deck day-head  
Tropical air conditioning  
Second generator  
Gyro stabilizer  
Flybridge crane

# PRINCIPAL CHARACTERISTICS

MANHATTAN 73

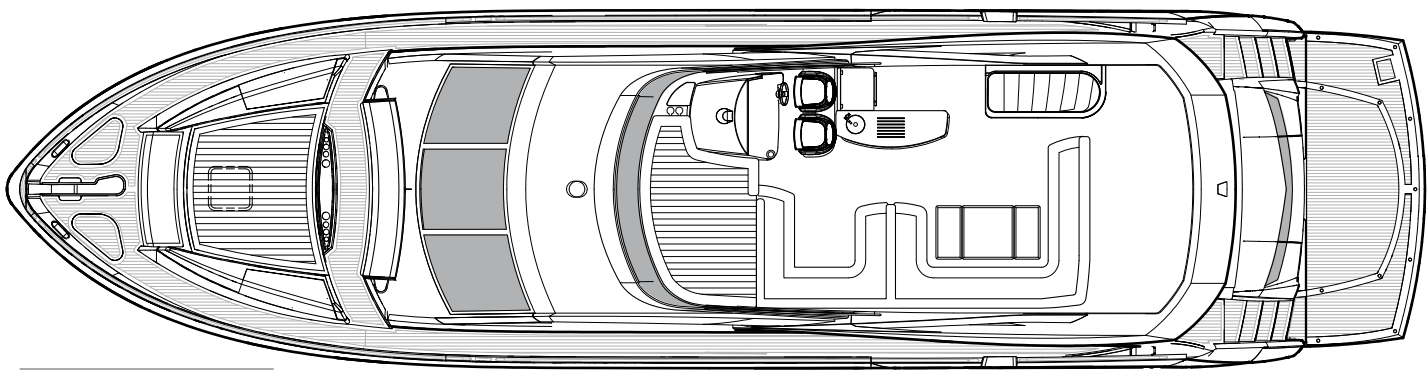
## PRINCIPAL CHARACTERISTICS

<b>Classification</b>	CE	
<b>Length overall – (incl. pulpit and transom platform)</b>	22.60m	74'2"
<b>Beam – (maximum)</b>	5.73m	18'10"
<b>Draft – (@ full load incl. props)</b>	1.63m	5'4"
<b>Displacement – (@ half load)</b>	44,900kg	98,780lb
<b>Fuel capacity</b>	5,000 litres	1,321 US gal.
<b>Fresh-water capacity</b>	1,200 litres	317 US gal.
<b>Black-water capacity</b>	185 litres	49 US gal.
<b>Propulsion</b>	Twin fixed-pitch propellers	
<b>Generators – standard</b>	1 x 27kW @ 50Hz 230v single phase (Euro) 1 x 27.5kW @ 60Hz 240/120v single phase (US)	
<b>Maximum speed</b>	up to 34 knots*	
<b>Cruising speed</b>	up to 25 knots*	
<b>Range</b>	up to 325 nautical miles*	

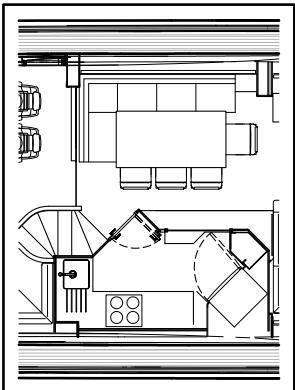
All principal characteristics and specifications are provisional and subject to final specification.

# GENERAL ARRANGEMENTS

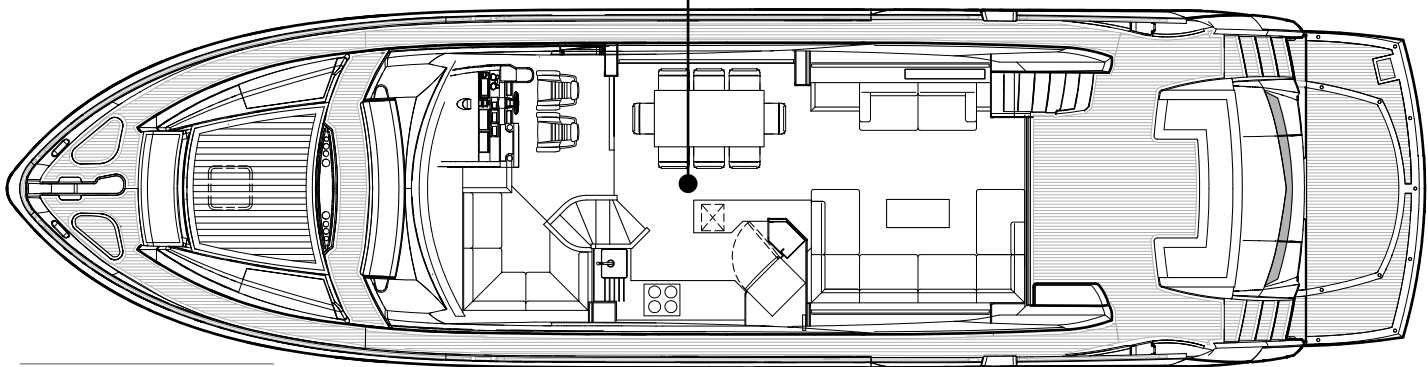
MANHATTAN 73



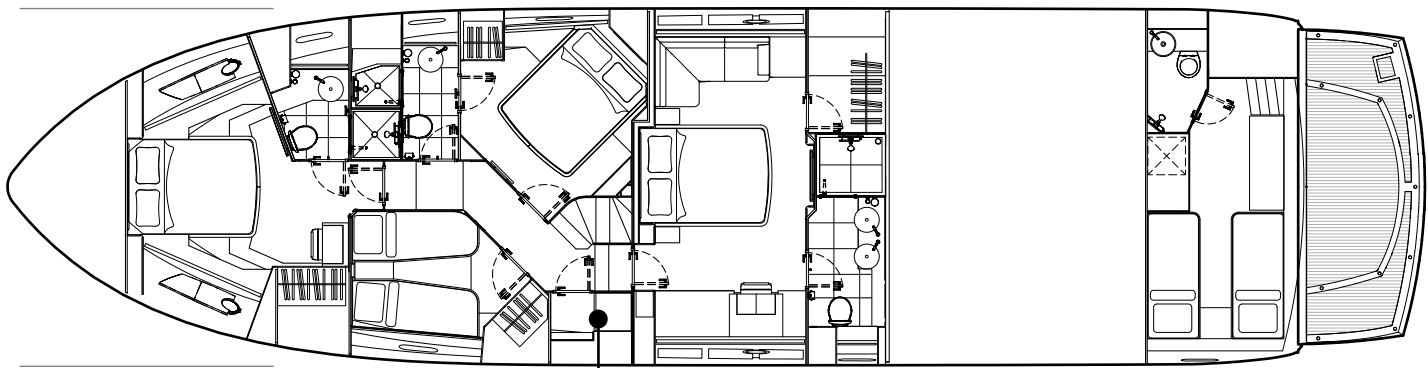
Flybridge



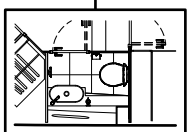
**Main deck option**  
Saloon shown with optional  
dinette seating and optional  
enclosed galley



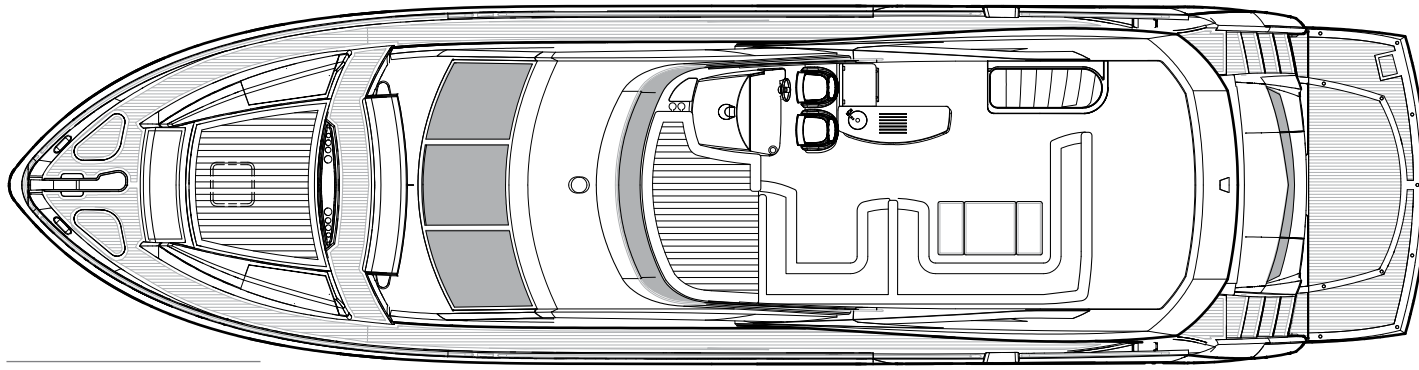
Main deck



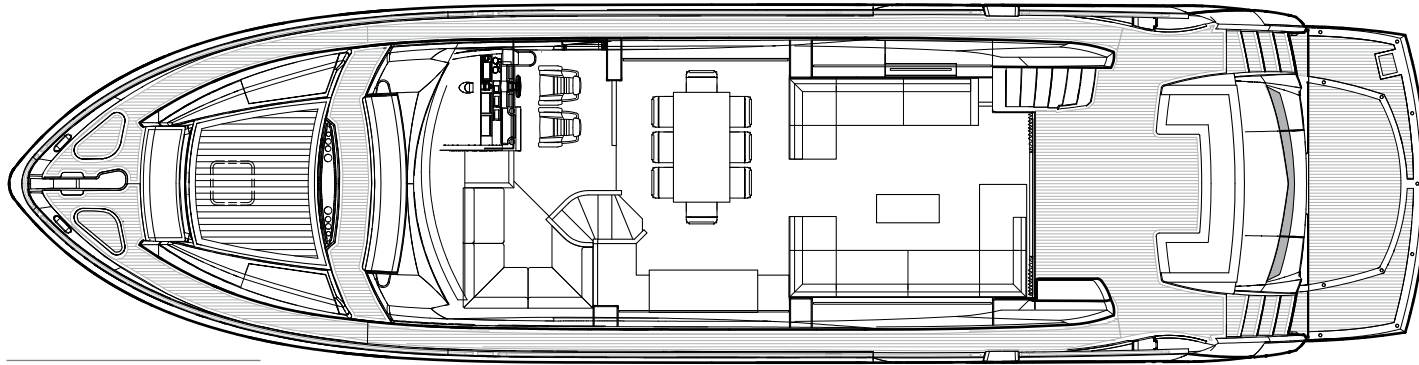
Lower deck



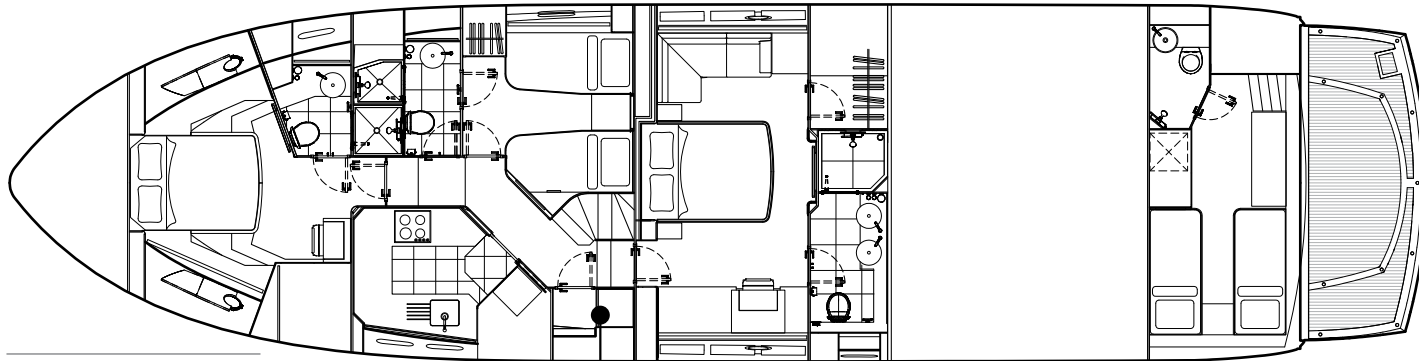
**Lower deck option**  
Shown with optional day head  
to port side



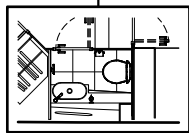
Flybridge



Main deck



Lower deck



**Lower deck option**  
Shown with optional day head  
to port side



## Awards

Sunseeker's success over the years is clearly underlined by the following list of national and international awards and achievements.

2011	Asia Boat Awards	Best brand presence in Asia	2004	Sydney Boat Show 2004	Best Overall Display
2011	European CEO corporate lifestyle awards	Best luxury brand	2004	Sydney Boat Show 2004	Best Marina Display
2011	Showboats Design Awards Florida	Naval architecture motor yacht 'Evil Zana' Predator 130.	2003	Australian Marine Awards	Manhattan 56, Award for Excellence
2010	World Superyacht Awards	Predator 130 'Evil Zana' – finalist	2003	Australian Marine Awards	Predator 68, Best Imported Non-Trailable Yacht
2010	Quintessentially Awards	Yacht charter of the year	2002	Entrepreneur of the Year Award	Robert Braithwaite MBE
2010	Sydney Boat Show	Boating Industry Association of NSW – Best Marina Display 2010	2001	Best Power Design Award	105 Yacht, The Superyacht Society
2010	Sydney Boat Show	Boating Industry Association of NSW – Best Overall Display	2001	Best Power Interior Award	105 Yacht, The Superyacht Society
2010	Asia Boating Awards	Predator 60 – Best Production Motor Yacht 51 to 80 feet	2001	President's Award	Southern California Marine Association
2009	Sydney Boat Show 2009	Display of Excellence	2000	Queen's Award for Enterprise	Continuous innovation and development
2009	Croatia Boat Show 2009	Predator 92 Sport – best in class	2000	The Times Exporter of the Year	Times Export Awards
2009	Croatia Boat Show 2009	30 Metre Yacht – best in class	2000	Robb Report Award	Best of the Best, Boating and Sailing
2009	Croatia Boat Show 2009	Best boat show stand	1999	Robb Report Award	Best of the Best, Boating and Sailing
2008	UK Motor Boat of the Year Awards 2008	Manhattan 60	1999	Motorboat of the Year	Predator 75, BT British Nautical Awards
2007	European Powerboat of the Year	Superhawk 43	1998	Superyacht Design Award	Manhattan 74, Superyacht Design Awards
2007	Asia Pacific Boating Awards	90 Yacht, Best of the Best	1998	Editor in Chief Awards	Yachts Magazine
2007	Modern Boating Magazine 2007	Portofino 47, Imported Powerboat of the Year	1997	Lifetime Achievement Award	Robert Braithwaite MBE, RYA Awards
2007	Australian Marine Industries Federation Awards	Predator 62, Imported Powerboat of the Year	1996	Motorcruiser of the Year Award	RYA British Nautical Awards
2007	Nominated by The Superyacht Society	37 Metre Yacht 'The Snapper'	1996	Exporter of the Year Award	DCCI Export Awards
2007	Queen's Award for Enterprise	International Trade	1995	Boat Builder of the Year Award	RYA/BMIF British Nautical Awards
2007	Robert Braithwaite is honoured with CBE	The Queen's Birthday Honours List	1994	Queen's Award for Export Achievement	Queen's Awards for Industry
2006	Nominated for three Superyacht Awards	Predator 108 'SHIVER'	1992	Best in the World Award	Renegade 60, Boating Magazine
2005	Australian Marine Industries Federation Awards	75 Yacht, Non-Trailable Boat Award	1992	Robert Braithwaite is honoured with MBE	The Queen's Birthday Honours List
2005	Australian Marine Industries Federation Awards	Portofino 46, Commendation	1990	Exporter of the Year	SW International Business Awards
2005	Modern Boating, Power Boat of the Year Awards	Predator 68, Imported Powerboat of the Year	1989	Queen's Award for Export Achievement	Queen's Awards for Industry
2005	Boats.com Marine Industry Web Awards	Manufacturers Category for <a href="http://www.sunseeker.com">www.sunseeker.com</a>	1987	Queen's Award for Export Achievement	Queen's Awards for Industry



Sunseeker International Limited has CE Approval which is compulsory for all boats with a LOA of 24m and below when sold in the EU.



QUINTESSENTIALLY BRITISH

\*Every attempt has been made to give accurate information, but performance and range figures are estimates given as a guide only. Dirt or growth on the hull, tuning of the engines, size, make of engines fitted, damage to propellers, the temperature of the air and water, the weight of fuel, water, stores, number of people, propeller pitch, quality of fuel and other matters, can all affect a boat's performance and range. For these and other reasons we can give no performance, range or other guarantees, and neither such guarantees nor anything contained herein constitutes an offer of contract or any representation or agreement, or may otherwise be relied upon. The photographs and artist's impressions in this brochure are from existing models in the Sunseeker range. There may be items shown in these photographs and artist's impressions that are not included in the standard inventory of the models shown. Specifications contained in this brochure are provisional only and should not be relied upon and may refer to models only intended for sale in a particular territory and not generally. No guarantee is given that any model will be available in any territory; however by contacting us we can advise you of models that are likely to be available in each territory. In some examples herein we have referred to measurements, specifications or other details applicable to a particular territory and no guarantee is given that these are applicable to your territory. Actual specifications will be provided when a sales order or enquiry is placed with us or our approved Sunseeker distributor. Specifications for models sold in different markets may vary and specifications and models may be changed or withdrawn at any time without prior notice. The individual specification for each vessel will be agreed as part of the sale contract between the purchaser and the Sunseeker distributor. Distributors are independently owned and operated entities, and therefore Sunseeker distributors are not owned by Sunseeker International Limited or any subsidiaries or other related entity of this company nor are they their agents. Therefore they have absolutely no authority to commit Sunseeker International Limited, or any subsidiary or other related entities of Sunseeker International Limited to any pledge, contract or agreement in any form or by any means unless first accepted in writing by Sunseeker International Limited. For ease of reference we have, in some cases, referred to "we" or "Sunseeker" and these terms should be taken to mean Sunseeker International Limited.