

88 YACHT







SUNSEEKER 88 YACHT

SUNSEEKER YACHT

Style: Luxury yacht

Accommodation: Up to 8 guests and 4 crew members

Tender and toys: Platform and flybridge

Drives: Shafts

Performance: Up to 30 knots

The Sunseeker 88 Yacht is perhaps one of the best balanced designs ever with eye pleasing proportions and fantastic interior volume. Highly successful and one of the most favoured charter models, her principal cabin plan broke new ground with the two stairway arrangement avoiding the need of corridor access to guest suites, so creating bigger cabins and enabling a forward-midships master suite isolated from both engine space and anchoring hardware.

At a size where owner-operation as well as crewed service is quite viable, the options of thrusters and joystick technology make for simplified handling. The long, flush decked flybridge features a second helm station with lounging and dining areas behind, and additional social areas include the aft cockpit below with sunpad and table arrangement, and also the foredeck with table seating and sunpads.

The crew quarters are accessed from the bathing platform which is home also to the sports tender.

SPECIFICATIONS

SUNSEEKER 88 YACHT

STANDARD SPECIFICATION

1 Construction

Hand-laid GRP
Gel coat including stripes
Vinylester skin coat with powderbound mat
Stitched multi-axial reinforced single skin bottom
Balsa cored hull topsides
PVC foam cored deck and superstructure
Hull stiffened with longitudinal stringers supported by transverse bulkheads and floors

2 Flybridge

Self-draining cockpit
Acrylic deflecting spray screen
Seating areas
Storage lockers under seating
Teak dining tables (natural finish) with GRP base
Upholstered sunbathing area forward
Stainless steel aft safety rails
Glass holders
Wetbar unit
Sink in wetbar unit
Icemaker in wetbar unit
Fridge in wetbar unit
Ceramic electric griddle in wetbar unit
Fire extinguisher in wetbar locker
Deckwash outlet
Low-level flybridge lighting 24v
Radar arch structure
Radar chair with navigation light assembly
Overhead lighting on underside of radar arch 24v
Two pairs marine speakers (connected to dedicated CD/radio in saloon and controlled by remote keypad at flybridge helm)
Non-slip deck finish
Ensign staff and socket

3 Flybridge helm

Two helm seats
Hydraulic steering
Duplicate engine controls
Analogue engine instrumentation
Autopilot repeater (Raymarine ST6002)
Radar/chart plotter with GPS repeater (1 x Raymarine E120W colour display)
Depth and speed multi display (Raymarine ST60+ Tridata)
VHF second station (Raymarine RAY240 DSC dual-station VHF)
Remote spotlight control
Magnetic compass
Steering indicator
Trim tab control
Horn control
Radio/CD remote keypad
Waterproof plug and socket 12v

4 Deck

Fittings all in 316 stainless steel and chromed bronze
Pair stainless steel bow cleats and fairleads
Stainless steel spring cleats with chafing bars
Pair stern cleats and fairleads
Stainless steel pulpit and cockpit rails
Stainless steel fendering with rubber insert
Stainless steel bow roller with anchor stopand devil's claw
Single electric windlass (Lewmar V8) 24v, starboard side, foredeck control only
Anchor 80kg claw-type (galvanised)
Anchor chain 100 metres/328 feet (12mm diameter, galvanised)
Stainless steel bow plate
Deckwash with outlets forward and aft
Chain locker
Curved direct glazed safety glass windscreen
Pantograph windscreen wipers and washers
Fresh-water filler
Fuel fillers port and starboard
IMCO navigation lights
Remote-controlled spotlight at bow
Low-level courtesy lights on side decks 24v
Skylight from VIP stateroom
Bow seat
Bow sunbathing pad
Bow teak table top (natural finish)
Glass holders

5 Aft cockpit

Teak-laid cockpit floor
Self-draining
Stairs to flybridge with teak treads
Aft fixed bench seating
Teak table (natural finish) with folding leaves on GRP base
Stern safety gates
Engine room access hatch
2 x stern capstan winches (Lewmar C4) 24v and fairleads
Overhead cockpit lights 24v
Low-level courtesy lights 24v
Pair marine speakers connected to saloon
AV system with Bose PMCI remote
Wetbar unit
Fire extinguisher in wetbar locker
Coolbox in wetbar unit
Rubbish bin in wetbar unit

6 Bathing platform

Teak-laid hydraulic lifting bathing platform (maximum lifting capacity 650kgs/1433lbs, maximum tender weight 550kgs/1212lbs)
Stairs to aft cockpit with teak treads
Foldout stainless steel swimming ladder
Hot and cold handheld swimming shower
Fresh-water marina connection
Television and telephone marina connection
Access to crew quarters
Dockside AC connection 1 x 100 amp
Glendinning Cablemaster
Euro spec only: 5m hydraulic telescopic passerelle

7 Covers

Windscreen sun screen
Flybridge instrument cover
Euro spec only:
Aft cockpit camper cover with windows

8 Saloon and dining

Stainless steel framed sliding patio door to aft cockpit
Patio door curtains with tie back
Sofa seating
Armchair
Coffee table
Scatter cushions
Flatscreen television (40") on rise and fall
DVD/CD/radio surround-sound system with five speakers and sub woofer (Bose 28)
iPod docking station connected to surround sound system
Control head for flybridge CD/radio
Air conditioning
Side windows with blinds
Drinks cabinet with glassware stowage for eight (8 x champagne, 8 x whisky, 1 x decanter)
Halogen overhead lighting 24v
Double AC sockets
Sensor connected to fire detection system
Telephone point (aft starboard side)
2 x table lamps
Dining table
8 x free-standing dining chairs
Storage cupboards
Fitted carpet
Access forward to main helm position
Door leading to galley
Stairs leading to master stateroom and two guest cabins

9 Day head (optional)

Tecma toilet 24v
Granite floor
Washbasin
Tap and accessories (toilet roll holder, soap dispenser, towel ring)
Mirror
Extractor fan
Halogen overhead lighting 24v
Side window with blind
Door to saloon

10 Galley

American style fridge/freezer with ice maker
4-ring ceramic hob AC
Hob extractor AC
Slimline dishwasher AC
Stainless steel sink
Hot and cold water
Rubbish bin
Crockery set (8 place settings)
Cutlery set (8 place settings)
Side window with blind
Storage consisting of cupboards, drawers and top-box lockers
Halogen overhead lighting 24v
Lighting under top box lockers 24v
Double AC sockets
Sensor connected to fire detection system
Air conditioning
Fire blanket
Fire extinguisher
First aid kit
Door to saloon area
Manual side opening door to port side deck
Euro spec only: microwave/oven AC
US spec only: oven AC
US spec only: small microwave

11 Main helm console and observation area

2 x upholstered helm seats with electric operation
Console with walnut effect fascia
Hydraulic power steering
Steering wheel
Radar/chart plotter with GPS (2 x Raymarine E120W colour displays)
Autopilot (Raymarine ST6002)
Depth and speed displays (Raymarine ST60+ Tridata)
VHF radio dual station (Raymarine RAY240 DSC dual-station VHF)
Magnetic compass
Horn control
Switch panels
Remote spotlight control
Trim tab controls
Rudder indicator
Analogue engine instrumentation
Fresh water gauge
Fuel gauge
Cigar lighter
Main control and monitoring panel (AC/DC) with generators control
Monitoring panel for fire detection system
Windscreen wiper and washer controls
Glass holder
Screen demister
Fire extinguisher
Manual side opening door to starboard side deck
Sofa seat on port side
Air conditioning
Halogen overhead lighting 24v
Fitted carpet
Double AC sockets (port side)
2 x telephone points (port side)
Staircase forward leading to VIP stateroom
Chart stowage area

12 Forward VIP stateroom

Stairs leading from main helm area
Double berth
Foam mattress for berth
Storage beneath berth
Drawers in berth end
Bedside lights 24v
Dressing table
Stool for dressing table
Sofa
Air conditioning
Flatscreen television (40") on bulkhead
DVD/CD player with two speakers
Halogen overhead lighting 24v
Two fixed portholes on each side with blind
Skylight with blind
Double AC socket
Fitted carpet
Sensor connected to fire detection system
2 x telephone points (port bedside and dressing table)
Doors to en suite and walk-in wardrobe

13 Forward VIP walk-in wardrobe

Hanging rails
Shelves
Full-length mirror
Halogen overhead lighting 24v
AC socket
Fitted carpet
Door to stateroom

14 Forward VIP en suite

Tecma toilet 24v
Vanity top and flooring
Twin washbasins
Taps and accessories (toothbrush and glass holder, soap dispenser, towel rails and towels)
Separate shower compartment
Acrylic folding shower door
Air conditioning outlet
Extractor fan
Mirrored vanity unit
Shelved cupboard
Halogen overhead lighting 24v
Opening porthole with mosquito screen and venetian blind
Shaver socket 240/110v
Door to stateroom

15 Lower deck lobby

Stairs leading down from main deck saloon area
Halogen overhead lighting 24v
AC socket
Fitted carpet
Large bilge access hatch
Sensor connected to fire detection system
Doors leading to lower deck guest accommodation (excluding forward VIP stateroom)

16 Midships master stateroom

Double berth
Foam mattress for berth
Storage beneath berth
Drawers in berth end and sides
Bedside units with storage
Bedside lights 24v
Dressing table
Pouffe for dressing table
Sofa
Air conditioning
Halogen overhead lighting 24v
Table lamp
Organic porthole arrangement with blind on each side (outer two portholes openable with mosquito screens)
Double AC sockets
2 x telephone points (dressing table and starboard bedside table)
Flatscreen television (40") on bulkhead
DVD/CD/radio surround system with two speakers and sub woofer (Bose 321)
Fitted carpet
Escape hatch on forward bulkhead
Doors to en suite and walk-in wardrobe

17 Midships master walk-in wardrobe

Hanging rails
Drawers
Shelves
Full length mirror
Halogen overhead lighting 24v
AC socket
Fitted carpet
Door to stateroom

18 Midships master en suite

Tecma toilet 24v
Bidet
Vanity top and flooring
Twin washbasins
Taps and accessories (toothbrush and glass holder, soap dispenser, towel rails and towels)
Separate shower compartment
Acrylic folding shower door
Extractor fan
Air conditioning outlet
Mirror
Halogen overhead lighting 24v
Opening porthole with mosquito screen and venetian blind
Shaver socket 240/110v
Door to stateroom

19 Aft starboard guest cabin

Two single berths
Foam mattresses for berths
Under berth stowage
2 x reading lights 24v
Wardrobe
Air conditioning
Halogen overhead lighting 24v
Organic porthole arrangement with blind (outer two portholes openable with mosquito screens)
Double AC socket
Sensor connected to fire detection system
Flatscreen television (19")
DVD/CD player with two speakers
Telephone point
Fitted carpet
Doors to en suite and lobby

20 Aft starboard en suite

Tecma toilet 24v
Vanity top and flooring
Washbasin
Taps and accessories (toothbrush and glass holder, soap dispenser, towel rails and towels)
Separate shower compartment
Acrylic folding shower door
Extractor fan
Air conditioning outlet
Vanity unit
Shelved cupboard
Halogen overhead lighting 24v
Opening porthole with mosquito screen and venetian blind
Shaver socket 240/110v
Door to guest cabin

21 Aft port guest cabin

Two single berths
Foam mattresses for berths
Under berth stowage
2 x reading lights 24v
Wardrobe
Air conditioning
Halogen overhead lighting 24v
Organic porthole arrangement with blind (outer two portholes openable with mosquito screens)
Double AC socket
Sensor connected to fire detection system
Flatscreen television (19")
DVD/CD player with two speakers
Telephone point
Fitted carpet
Doors to en suite and lobby

22 Aft port en suite

Tecma toilet 24v
Vanity top and flooring
Washbasin
Taps and accessories (toothbrush and glass holder, soap dispenser, towel rails and towels)
Separate shower compartment
Acrylic folding shower door
Extractor fan
Air conditioning outlet
Vanity unit
Shelved cupboard
Halogen overhead lighting 24v
Opening porthole with mosquito screen and venetian blind
Shaver socket 240/110v
Door to guest cabin

23 Aft crew mess

Access door from stern
Sink with tap
Worktop with undercounter storage
Air conditioning
Small microwave
Undercounter fridge
AC sockets
Washer/dryer AC
Telephone point
Sensor connected to fire detection system
Halogen overhead lighting 24v
Opening porthole with mosquito screen and venetian blind
Seating area
Table
Flatscreen television (19")
DVD/CD with two speakers
Non slip safety flooring
Doors to crew cabins and crew toilet/shower
Watertight door to engine room

24 Aft crew cabin

Twin berths
Foam mattresses for berths
Reading lights 24v
Air conditioning
Wardrobe
Halogen overhead lighting 24v
Double AC socket
Telephone point
Sensor connected to fire detection system
CD/radio with two speakers
Fitted carpet
Opening porthole with mosquito screen and curtains
Door to crew mess

25 Forward crew cabin

Twin bunk berths
Foam mattresses for berths
Reading lights 24v
Air conditioning
Wardrobe
Halogen overhead lighting 24v
Double AC socket
Telephone point
Sensor connected to fire detection system
CD/radio with two speakers
Fitted carpet
Opening porthole with mosquito screen and curtains
Door to crew mess

26 Crew toilet and shower

Tecma toilet 24v
Washbasin
Shower cubicle
Mirror
Vanity unit
Halogen overhead lighting 24v
Shaver socket 240/110v
Door to crew mess

27 Engine compartment and ancillaries

Soundproofing throughout
Fuel filters/water separators to engines
Fuel filters/water separators to generators
FM200 manual/automatic fire extinguishing system combined with engines, generators and fans shutdown
Automatic bilge and flood pumps with high level alarms
Air extraction fans AC
Generator exhaust silencers and water separators
Engine exhaust dry risers and water injection
Strainers to all raw water inlets
Sensor connected to fire detection system

28 Electrical system

Euro spec only: 2 x 25kW @ 50Hz slow speed
Kohler generators with underwater silent exhaust and sound box
US spec only: 2 x 28kW @ 60Hz slow speed
Kohler generators with underwater silent exhaust and sound box
Dockside AC connection 1 x 100 amp
Glendinning cablemaster
Galvanic isolator
Semi-automatic AC power management system
24v and 12v DC electrical system with full circuit breaker protection
8 x engine batteries 24v circuit
8 x domestic batteries 24v circuit
4 x generator batteries 12v circuit
Alternator split charging system
Remote battery switches controlled from aft cockpit locker
2 x 95 amp battery charger for 24v circuits
40 amp battery charger for 12v circuits
2 x 2kW immersion heaters for calorifier
AC sockets throughout the boat
24v hand light and cable
Fire detection system with sensors in all cabins and monitoring beside main helm position

29 Underwater gear

NAB 5 blade propellers
Bronze (AB2) P-brackets
90mm Temet 25 propeller shafts
Self aligning shaft seal with spare seal
High-performance bronze rudders
Valves to all underwater skin fittings
Full cathodic bonding system to zinc anodes
Stainless steel trim tabs
Hydraulic bow thruster (30hp, sequential operation)
Hydraulic stern thruster (30hp, sequential operation)
Antifouling

30 Systems

Hydraulic power steering
Electric toilet system with integral macerator (Tecma 24v) with two-switch control
Toilets discharging overboard or to black water tank
Black water tank discharging to dockside or overboard
Aluminium fresh water tank with electric sending unit
Integral GRP fuel tank with electric sending unit
Water pressure system (24v)
Hot water tank, 200 litre (with 2 x 2kW immersion heaters)
Hot water circulating pump AC
Washbasins, showers and air conditioning fan coils to drain to grey-water tank
Grey-water tank discharging overboard
Chilled water air conditioning system (reverse cycle) AC
Bilge pumping system (24v)
FM200 manual/automatic fire extinguishing system combined with engines, generators and fans shutdown
Auxiliary hydraulics for trim tabs and platform (24v)

31 Miscellaneous

Retractable boat hook
6 x docking lines
(6 x 15 metre, 20mm diameter, black)
1 x tender line
(1 x 10 metre, 10mm diameter, black)
8 x fenders (F7, 15' x 41", white)
8 x fender ties
(8 x 3.5 metre, 10mm diameter, black)
Flagstaff with line
Pennant mast with pennant flag
Mosquito screens for openable portlights
Vacuum cleaner
Spare bulbs
Small toolkit
12 x towel sets
First aid kit
Fire blanket
Leather cleaning kit
Lead lamp
Deckwash fitting and hose reel
Portable fire extinguishers

PRINCIPAL CHARACTERISTICS

SUNSEEKER 88 YACHT

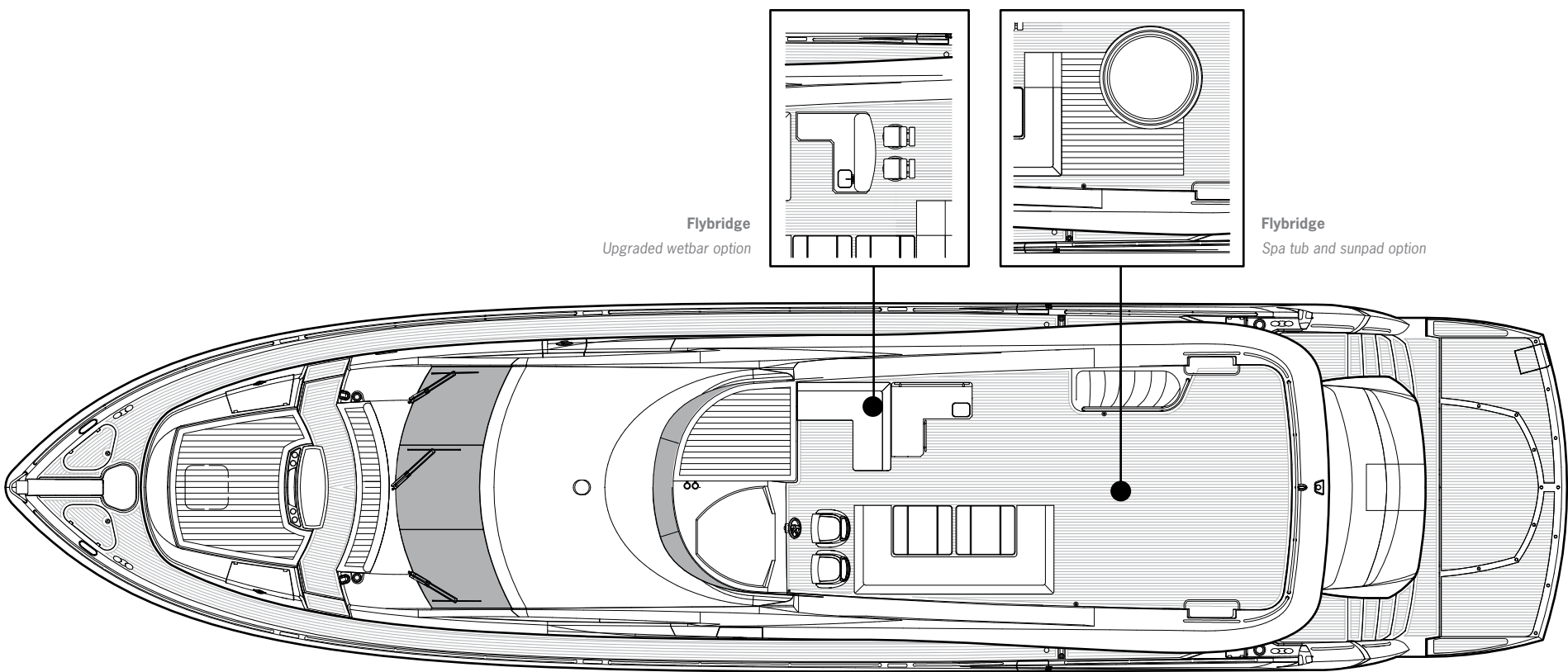
PRINCIPAL CHARACTERISTICS

Classification	CE	
Length overall – (incl. pulpit and transom platform)	26.88m	88'2"
Length hull – (ISO 8666)	23.67m	77'8"
Beam – (maximum)	6.41m	21'0"
Draft – (@ full load, incl. props)	1.97m	6'6"
Displacement – (@ normal half load)	67,600kg	148,720lb
Fuel capacity	7,500 litres	1,982 US gal.
Fresh-water capacity	1,500 litres	396 US gal.
Black-water capacity	435 litres	115 US gal.
Propulsion	Twin fixed-pitch propellers	
Generators – standard	2 x 25kW @ 50Hz 230v single phase (Euro) 2 x 28kW @ 60Hz 120v single phase (US)	
Maximum speed	up to 30 knots*	
Cruising speed	up to 23 knots*	
Range	up to 350 nautical miles*	

All principal characteristics and specifications are provisional and subject to final specification.

GENERAL ARRANGEMENTS

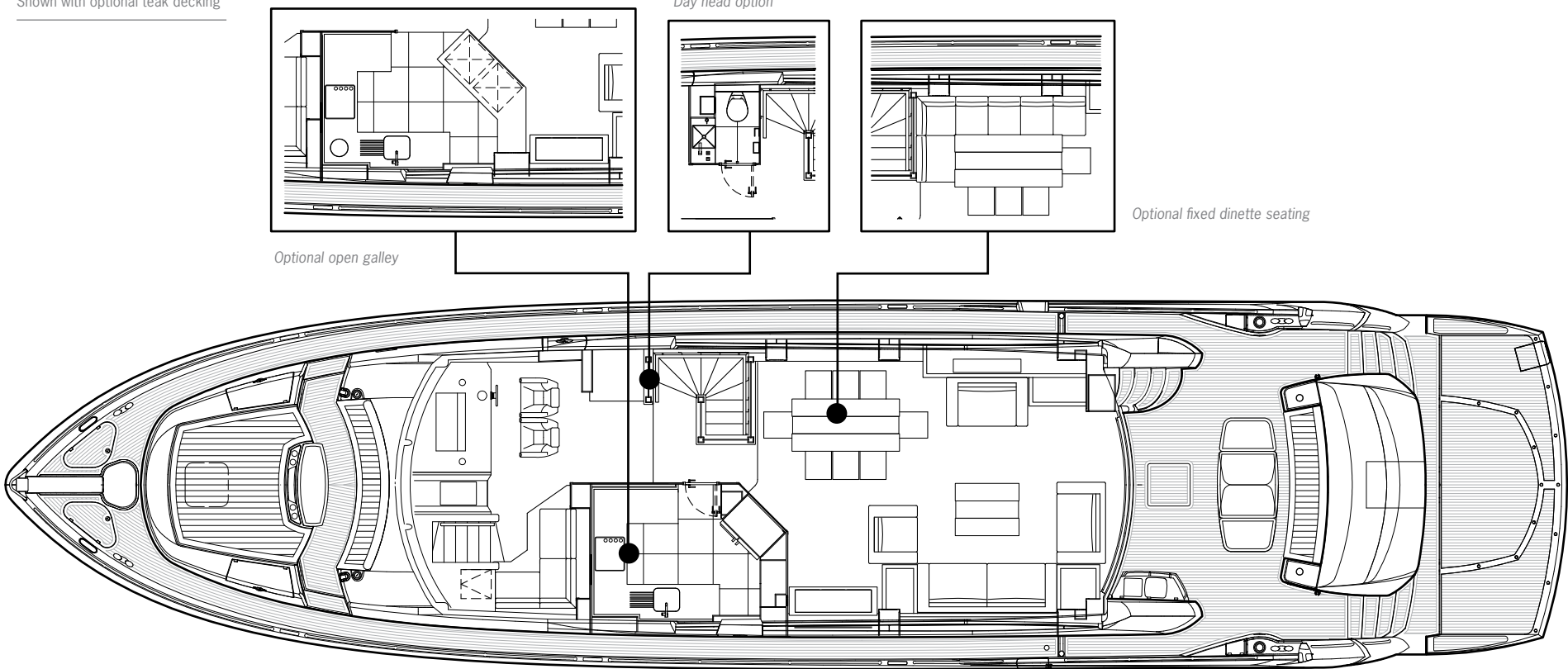
SUNSEEKER 88 YACHT



Flybridge
Upgraded wetbar option

Flybridge
Spa tub and sunpad option

Flybridge
Shown with optional teak decking

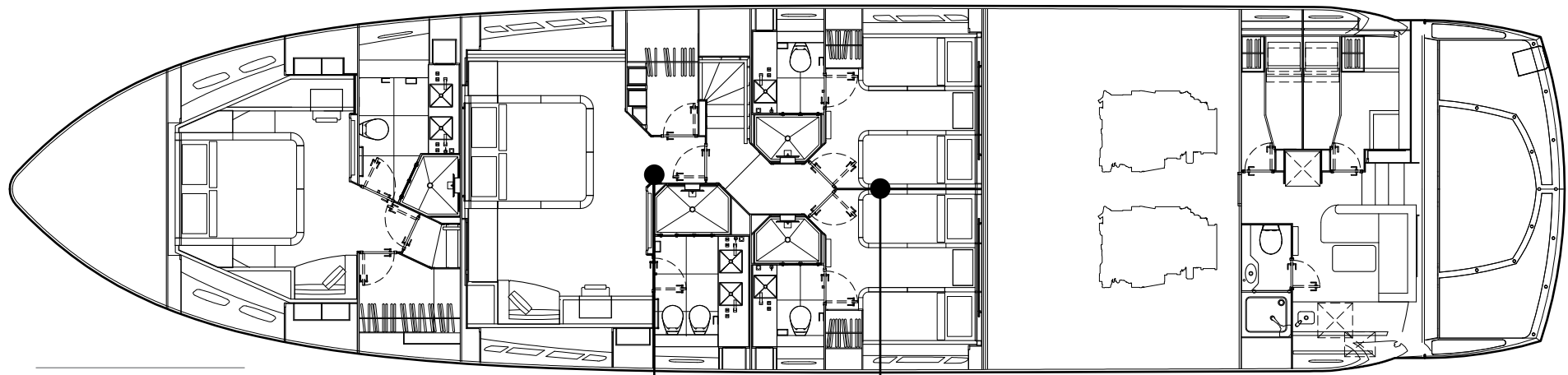


Optional open galley

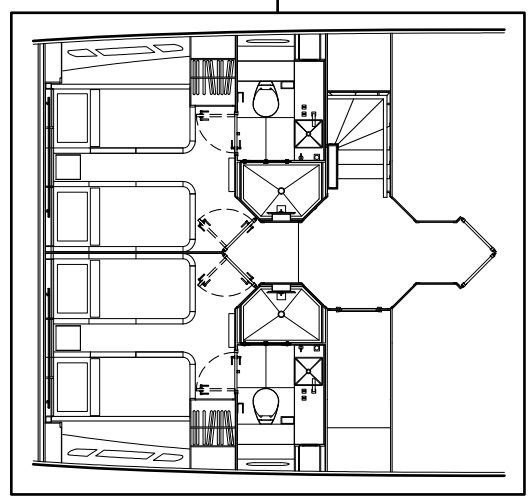
Day head option

Optional fixed dinette seating

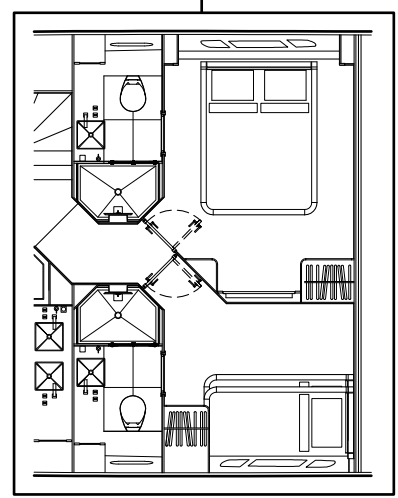
Main deck



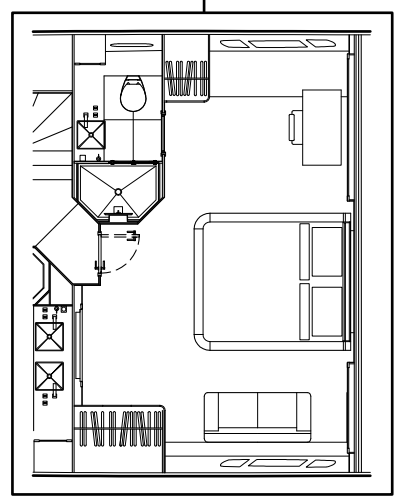
Lower deck



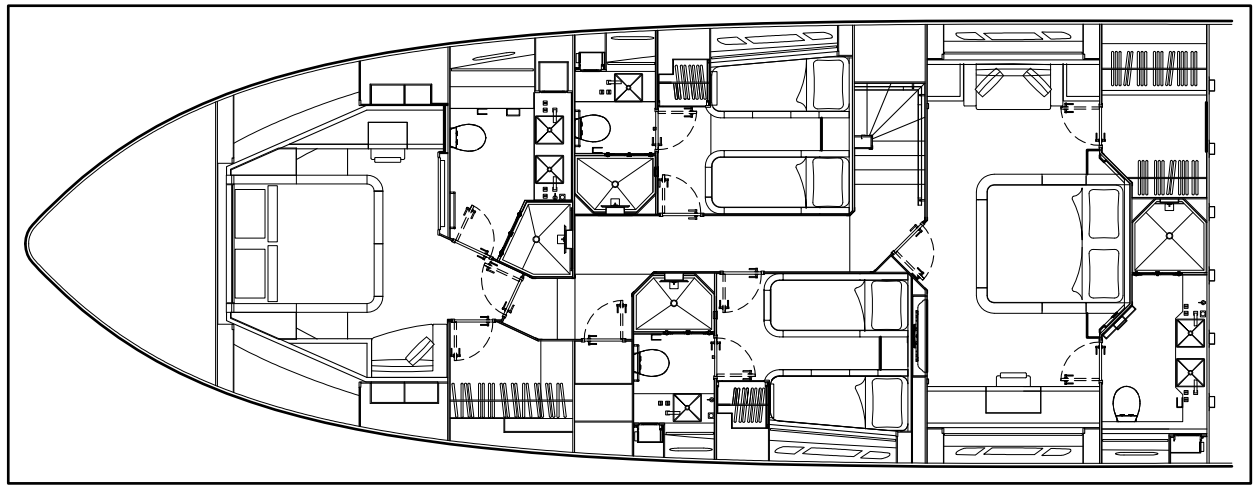
Lower deck
Optional midship port and
starboard twin guest cabins



Lower deck
Optional double guest starboard,
Pullman guest port



Lower deck
Optional VIP suite



Lower deck
Optional single lower deck accommodation access



Awards

Sunseeker's success over the years is clearly underlined by the following list of national and international awards and achievements.

2011	Asia Boat Awards	Best brand presence in Asia	2004	Sydney Boat Show 2004	Best Overall Display
2011	European CEO corporate lifestyle awards	Best luxury brand	2004	Sydney Boat Show 2004	Best Marina Display
2011	Showboats Design Awards Florida	Naval architecture motor yacht 'Evil Zana' Predator 130.	2003	Australian Marine Awards	Manhattan 56, Award for Excellence
2010	World Superyacht Awards	Predator 130 'Evil Zana' – finalist	2003	Australian Marine Awards	Predator 68, Best Imported Non-Trailable Yacht
2010	Quintessentially Awards	Yacht charter of the year	2002	Entrepreneur of the Year Award	Robert Braithwaite MBE
2010	Sydney Boat Show	Boating Industry Association of NSW – Best Marina Display 2010	2001	Best Power Design Award	105 Yacht, The Superyacht Society
2010	Sydney Boat Show	Boating Industry Association of NSW – Best Overall Display	2001	Best Power Interior Award	105 Yacht, The Superyacht Society
2010	Asia Boating Awards	Predator 60 – Best Production Motor Yacht 51 to 80 feet	2001	President's Award	Southern California Marine Association
2009	Sydney Boat Show 2009	Display of Excellence	2000	Queen's Award for Enterprise	Continuous innovation and development
2009	Croatia Boat Show 2009	Predator 92 Sport – best in class	2000	The Times Exporter of the Year	Times Export Awards
2009	Croatia Boat Show 2009	30 Metre Yacht – best in class	2000	Robb Report Award	Best of the Best, Boating and Sailing
2009	Croatia Boat Show 2009	Best boat show stand	1999	Robb Report Award	Best of the Best, Boating and Sailing
2008	UK Motor Boat of the Year Awards 2008	Manhattan 60	1999	Motorboat of the Year	Predator 75, BT British Nautical Awards
2007	European Powerboat of the Year	Superhawk 43	1998	Superyacht Design Award	Manhattan 74, Superyacht Design Awards
2007	Asia Pacific Boating Awards	90 Yacht, Best of the Best	1998	Editor in Chief Awards	Yachts Magazine
2007	Modern Boating Magazine 2007	Portofino 47, Imported Powerboat of the Year	1997	Lifetime Achievement Award	Robert Braithwaite MBE, RYA Awards
2007	Australian Marine Industries Federation Awards	Predator 62, Imported Powerboat of the Year	1996	Motorcruiser of the Year Award	RYA British Nautical Awards
2007	Nominated by The Superyacht Society	37 Metre Yacht 'The Snapper'	1996	Exporter of the Year Award	DCCI Export Awards
2007	Queen's Award for Enterprise	International Trade	1995	Boat Builder of the Year Award	RYA/BMIF British Nautical Awards
2007	Robert Braithwaite is honoured with CBE	The Queen's Birthday Honours List	1994	Queen's Award for Export Achievement	Queen's Awards for Industry
2006	Nominated for three Superyacht Awards	Predator 108 'SHIVER'	1992	Best in the World Award	Renegade 60, Boating Magazine
2005	Australian Marine Industries Federation Awards	75 Yacht, Non-Trailable Boat Award	1992	Robert Braithwaite is honoured with MBE	The Queen's Birthday Honours List
2005	Australian Marine Industries Federation Awards	Portofino 46, Commendation	1990	Exporter of the Year	SW International Business Awards
2005	Modern Boating, Power Boat of the Year Awards	Predator 68, Imported Powerboat of the Year	1989	Queen's Award for Export Achievement	Queen's Awards for Industry
2005	Boats.com Marine Industry Web Awards	Manufacturers Category for www.sunseeker.com	1987	Queen's Award for Export Achievement	Queen's Awards for Industry



Sunseeker International Limited has CE Approval which is compulsory for all boats with a LOA of 24m and below when sold in the EU.



QUINTESSENTIALLY BRITISH

*Every attempt has been made to give accurate information, but performance and range figures are estimates given as a guide only. Dirt or growth on the hull, tuning of the engines, size, make of engines fitted, damage to propellers, the temperature of the air and water, the weight of fuel, water, stores, number of people, propeller pitch, quality of fuel and other matters, can all affect a boat's performance and range. For these and other reasons we can give no performance, range or other guarantees, and neither such guarantees nor anything contained herein constitutes an offer of contract or any representation or agreement, or may otherwise be relied upon. The photographs and artist's impressions in this brochure are from existing models in the Sunseeker range. There may be items shown in these photographs and artist's impressions that are not included in the standard inventory of the models shown. Specifications contained in this brochure are provisional only and should not be relied upon and may refer to models only intended for sale in a particular territory and not generally. No guarantee is given that any model will be available in any territory; however by contacting us we can advise you of models that are likely to be available in each territory. In some examples herein we have referred to measurements, specifications or other details applicable to a particular territory and no guarantee is given that these are applicable to your territory. Actual specifications will be provided when a sales order or enquiry is placed with us or our approved Sunseeker distributor. Specifications for models sold in different markets may vary and specifications and models may be changed or withdrawn at any time without prior notice. The individual specification for each vessel will be agreed as part of the sale contract between the purchaser and the Sunseeker distributor. Distributors are independently owned and operated entities, and therefore Sunseeker distributors are not owned by Sunseeker International Limited or any subsidiaries or other related entity of this company nor are they their agents. Therefore they have absolutely no authority to commit Sunseeker International Limited, or any subsidiary or other related entities of Sunseeker International Limited to any pledge, contract or agreement in any form or by any means unless first accepted in writing by Sunseeker International Limited. For ease of reference we have, in some cases, referred to "we" or "Sunseeker" and these terms should be taken to mean Sunseeker International Limited.