

30 METRE YACHT







SUNSEEKER 30 METRE YACHT

SUNSEEKER YACHT

Style: Luxury yacht

Accommodation: Up to 12 guests and 5 crew members

Tender and toys: Platform and garaged

Drives: Shafts

Performance: Up to 28 knots

A clever design, the 30 Metre Yacht sneaks in just under the 24 Metre Load Line ruling so avoiding the extra costs and complications implicit in the LY2 coding any larger boat needs for commercial charter operation. This is a real achievement given the volume of the yacht which lends itself particularly well to charter with one option reducing guest suites to four but creating two of near equal owner status. The main deck master suite though is exceptional with its cunning duplex arrangement.

Refreshingly for an upper-wheelhouse design of this size, the galley beneath the bridgedeck is completely free of the constraints suffered so frequently by others of this plan who simply fail to achieve such a practical combination of design lines and space, with the same applying to crew accommodation which here on the 30 Metre exceeds even the new statutory requirements.

This is a big boat in a small package with a huge flybridge and tender garage with easy-launch system over the hydraulic beach platform.

SPECIFICATIONS

SUNSEEKER 30 METRE YACHT

STANDARD SPECIFICATION

1 Construction

Hull and deck: Gel coat including stripes
Hull and deck: Vinyester skin coat with powder bound mat
Hull and deck: Stitched multi-axial single skin hull bottom
Hull and deck: Balsa/PVC foam cored topsides – skinned with stitched multi-axials
Hull and deck: PVC foam cored deck
Hull and deck: Longitudinally stiffened with foam formers over-laminated with stitched multi-axials
Hull & Deck: Transversely stiffened with GRP ringframes, marine ply and sandwich bulkheads
Superstructure: Gel coat
Superstructure: PVC foam cored and skinned with stitched multi-axials
Superstructure: Stiffened with foam formers over-laminated with stitched multi-axials

2 Flybridge deck

Stairs from the wheelhouse and from the aft cockpit
Stainless steel framed windscreen
Fibreglass radar arch
Lighting on underside of radar arch 24v
Low-level lighting 24v
Two pairs of marine speakers (connected to saloon AV system)
Remote control for speakers (Bose PMCI remote)
Deckwash outlet
Built-in U shaped dining seating area on port side
Dining table
Forward port side L-shaped bench seat
GRP storage cupboard aft of helm seats
Wet bar with sink
Fridge in wetbar
Icemaker in wetbar
Ceramic electric griddle on wetbar top
Storage cupboard in wetbar
3 x bar stools
Stern rails
Ensign and staff
Non-slip deck finish

3 Flybridge helm

2 x helm seats
GRP dashboard
Electronic controls for main engines with single levers
Engine instrumentation
Bow thruster control
Trim tab control
Depth and speed display
Rudder angle indicator
Autopilot repeater
Radar/chartplotter/GPS colour display
Magnetic compass
VHF handset and speaker

4 Deck

Bulwark access doors on port and starboard sides
2 x anchor windlasses with hand control
2 x hawses with roller, chain stopper and devil's claw
2 x 120kg galvanised anchors
2 x 14mm diameter galvanised anchor chains (1 @ 165m, 1 @ 137m in length)
Stainless steel cleats
Fairleads bow and stern, port and starboard
Manual anchor and chain (salt water) wash down, operated via switch located in forward locker
Fresh water deckwash with outlet forward
Pulpit and handrails with stainless steel stanchions
Safety glass side windows and windscreen
Teak laid side decks
Low level lighting around side decks 24v
Sunpad and seat at the bow
Remote control spotlight on the bow
Horn located on wheelhouse roof
Starboard aft sidedeck safety locker
2 x fire buckets with lines in safety locker
Axe in safety locker

5 Aft cockpit and bathing platform

Built-in aft seat moulding
Fixed natural teak dining table on GRP pedestals
Teak laid cockpit sole
Teak stairs to flybridge
Teak stairs to bathing platform
Teak laid, hydraulic bathing platform (max lift capacity 1200kgs/2645lbs, max tender weight 1000kgs/2205lbs)
Stainless steel framed sliding doors to main saloon
Side deck door and stairs leading to engine room
Overhead lighting 24v
1 x pair marine speakers (connected to main saloon AV system)
Remote control for speakers (Bose PMCI remote)
2 x capstans at the stern
4 x stainless steel cleats and 4 x fairleads at the stern
2 x stern gates
Hydraulic retractable passerelle
Power operated door for stern garage
Swimming ladder
Hand-held swimming shower
Stern locker with dockside water feed
Stern locker with fresh water deckwash outlet
2 x pop-up cleats on bathing platform

6 Stern garage

Power operated door
Deckwash outlet
AC lighting (IP rated)
Electric winch with controls
AC and DC outlets in waterproof enclosures (fitted with double pole isolation outside the space)
Natural ventilation air in, forced air out, with a minimum of six air changes an hour
Gas detector with alarm indication at helm

7 Main saloon and dining

Aft sliding doors in stainless steel and safety glass
Sofas
Armchairs x2
Coffee table
Side windows with blinds
Flatscreen television (40") fold-down from ceiling
iPod docking station
Surround-sound system with DVD/CD/radio (Bose 38)
Dining table
8 x dining chairs
Storage cabinets
Chinaware, glassware and cutlery (8 settings)
Halogen overhead lighting
Table lamps
Air conditioning
Telephone point
Fitted carpet
Data point (RJ45)
AC sockets
Smoke detector
Door to galley on port side
Access to side entrance lobby on starboard side

8 Galley

Entrance from the dining area
Weather tight side door leading to port side deck (manual)
Safety flooring
Worktop with sinks
Ceramic electric four-ring hob
Extractor fan
Electric oven
Microwave
Fridge
Freezer
Icemaker
Dishwasher (full size)
Washing machine
Tumble dryer
Cabinets and overhead lockers
Side windows with venetian blind
Halogen overhead lighting
Air conditioning
AC sockets
Data point (RJ45)
Telephone point
Heat detector
Stairs forward leading to crew quarters

9 Main deck starboard side lobby

Stairs up to wheelhouse
Stairs down to lower deck guest accommodation
Weather tight side door leading to starboard side deck (manual)
Halogen overhead lighting
Side window with blind
AC socket
Fitted carpet
Doors leading to day head and master stateroom

10 Day head

Tecma toilet (24v)
Washbasin and vanity top
Stone floor
Mirror
Complete set of accessories
Halogen overhead lighting
Extractor fan
Door to main deck starboard side lobby
Air conditioning outlet

11 Raised wheelhouse

Stairs up from main deck starboard side lobby
Pilot seat
Main engines single lever electronic controls
Engine instrumentation
High exhaust temperature warning
Engine stop warning
Trim tab control
Bow thruster control
Radar/chartplotter/GPS with two PC displays
Autopilot
VHF with DSC
Depth and speed displays
Rudder angle indicator
Helm control panel with backlit glass finish and stainless steel push button controls
Magnetic compass
Monitoring of boat systems
Windscreen wipers with glass washing system
Demisting fans for windscreen
Searchlight control
Telephone points
AC sockets
Halogen overhead lighting
Air conditioning
Fire detection panel
Smoke detector
Teak floor
Teak stairs leading to main deck
Teak stairs leading to flybridge
Framed sliding door to flybridge
Storage on outboard port side
L-shaped sofa on aft port side

12 Main deck stateroom

Entrance area with sideboard
Sofa seating area
Dressing table
Low back chair
Flatscreen television (40") on rotate mechanism
Surround-sound system with DVD/CD/radio
Steps down to berth area
Double berth
Sprung mattress for berth
Bedside units
Fitted carpet
Fixed portlights with blinds
Halogen overhead lighting
Storage cabinets and drawers
Air conditioning
Telephone point
Data point (RJ45)
AC sockets
Smoke detector
Doors to en suite and lobby

13 Main deck walk-in wardrobe

Hanging rails
Low level storage
Safe deposit box (12" door, digital combination + metal box)
Halogen overhead lighting
AC socket
Fitted carpet

14 Main deck stateroom en suite

Tecma toilet (24v)
Bidet
Lockers and shelves
2 x washbasins and vanity top
Stone flooring
Mirrors
Shower cubicle with door
Razor socket
Extractor fan
Halogen overhead lighting
Complete set of accessories
Door to stateroom
Air conditioning outlet

15 Lower deck lobby

Stairs down from main deck to lower deck lobby area
Fitted carpet
Halogen overhead lighting
AC socket
Smoke detector
Doors leading to guest cabins

16 Lower deck stateroom

Entrance area with sideboard
Double berth
Sprung mattress for berth
Bedside cabinets
Reading lights
Sofa
Flatscreen television (40")
Surround system with DVD/CD/radio (Bose 321)
Portholes with blinds
Storage units
Dressing table
Low back chair for dressing table
Data point (RJ45)
Telephone point
AC sockets
Halogen overhead lighting
Fitted carpet
Air conditioning
Smoke detector
Doors to en suite and walk-in wardrobe

17 Lower deck stateroom walk-in wardrobe

Hanging rails
Drawers for storage
Pigeon hole storage
Safe deposit box
Halogen overhead lighting
Fitted carpet
Door to stateroom

18 Lower deck stateroom en suite

Tecma toilet (24v)
Bidet
Lockers and shelves
2 x washbasins and vanity top
Stone flooring
Mirrors
Shower cubicle with door
Razor socket
Extractor fan
Halogen overhead lighting
Complete set of accessories
Porthole with blind
Door to stateroom
Air conditioning outlet

19 Port forward twin guest cabin

Two single berths
Sprung mattresses for berths
Storage under berths
Bedside cabinet
Reading lights
Overhead halogen lighting
Flatscreen television (19")
Surround sound system with DVD/CD/radio (Bose 321)
Portholes with blind
Wardrobe
Telephone point
Data point (RJ45)
AC sockets
Fitted carpet
Air conditioning
Smoke detector
Doors to en suite and lobby

20 Port forward guest en suite

Tecma toilet (24v)
Washbasin and vanity top
Lockers and shelves
Stone flooring
Mirrors
Shower cubicle with door
Porthole with blind
Razor socket
Halogen overhead lighting
Extractor fan
Complete set of accessories
Air conditioning outlet

21 Starboard forward twin guest cabin

Two single berths
Sprung mattresses for berths
Storage under berths
Bedside cabinet
Reading lights
Overhead halogen lighting
Flatscreen television (19")
Surround sound system with DVD/CD/radio (Bose 321)
Portholes with blind
Wardrobe
Telephone point
Data point (RJ45)
AC sockets
Fitted carpet
Air conditioning
Smoke detector
Doors to en suite and lobby

22 Starboard forward guest en suite

Tecma toilet (24v)
Washbasin and vanity top
Lockers and shelves
Stone flooring
Mirrors
Shower cubicle with door
Porthole with blind
Razor socket
Halogen overhead lighting
Extractor fan
Complete set of accessories
Air conditioning outlet

23 Crew mess

Stairs leading from Galley
L-shaped sofa
Dining table
Flatscreen television (19")
CD/DVD with two speakers
VHF with DSC
Depth and speed display
Telephone point
Data point (RJ45)
AC sockets
Halogen overhead lighting
Air conditioning
Smoke detector
Safety flooring

24 Forward starboard crew cabin

Twin bunk berths
Foam mattresses for berths
Reading lights
Wardrobe
Porthole with curtains
Halogen overhead lighting
CD/radio with two speakers
Fitted carpet
Air conditioning
AC socket
Data point (RJ45)
Smoke detector
Telephone point

25 Aft starboard crew cabin

Twin bunk berths
Foam mattresses for berths
Wardrobe
Reading lights 24v
Porthole with curtains
Halogen overhead lighting
CD/radio with two speakers
Fitted carpet
Air conditioning
AC socket
Data point (RJ45)
Smoke detector
Telephone point

26 Aft port crew cabin

Single berth
Foam mattress for berth
Wardrobe
Reading lights 24v
Porthole with curtains
Halogen overhead lighting
CD/radio with two speakers
Fitted carpet
Air conditioning
AC socket
Data point (RJ45)
Smoke detector
Telephone point

27 Crew toilet/shower

Tecma toilet (24v)
Washbasin
Lockers and shelves
Shower cubicle
Extractor fan
Razor socket
Halogen overhead lighting
Accessories

28 Engine room

Hydraulic Power steering
Emergency steering
Garage door and trim tabs hydraulic control unit – 24V
Lifting platform hydraulic control unit – 400v AC
Passerelle hydraulic control unit – 400v AC
1 x watermaker (180 litres/47 US gals per hour)
Emergency steering
Oil exchange system
Air intakes fitted with mist eliminator system
Air extraction fans (AC) fitted with butterfly shutdown dampers
Exhaust gas temperature sensor
Inspection lamp
Toolbox
Fluorescent lights (AC)
Emergency lighting (DC)
Telephone point
Simrad RS87 intercom speaker
Fire alarm systems
Engine room fire extinguishing system (FM200)
Tender garage fire extinguishing system (FM200)
AC/DC electrical outlets (double AC and 1 x 24v outlet)
Power management system panel
Maglite torch
Manual submersible bilge pumps
1 x AC fire pump
Portable CO₂ fire extinguisher

29 Generators

Euro spec only: Generators 2 x 33kW @ 50Hz
US spec only: Generators 2 x 40kW @ 60Hz

30 Underwater gear

Bow thruster – hydraulic engine driven (55hp)
Seawater strainers – nickel plated bronze
Full cathodic bonding system to zinc anodes
Hydraulic trim tabs – stainless steel
Propeller shafts – Marinemet 25 – Duplex F51 – high grade stainless steel
High performance rudders – AB2 nickel aluminium bronze
P-brackets – AB2 nickel aluminium bronze c/w water lubricated bearing
Self aligning shaft seal including spare seal
5-blade NAB bronze propellers

31 Safety equipment

16 x adult life jackets
1 x regulation First Aid kit
1 x signal flare kit
2 x life rings
2 x 8 man liferafts (non SOLAS approved)

31 Boat covers

Flybridge overall seating covers
Flybridge table covers
Flybridge bar stool covers
Flybridge console cover
Flybridge helm seat covers
Aft cockpit overall seating covers
Aft cockpit table cover
Windscreen cover
Foredeck seating and sunpad cover
Saloon coffee table cover
Saloon dining table cover
Wheelhouse helm seat cover

32 Miscellaneous

1 x set Egyptian cotton sheets consisting of: mattress protector, 1 x fitted bottom sheet, 1 x flat top sheet, 1 x Oxford style and 1 x Housewife pillowcase per person
1 x set of towels per person
10 x large fenders with ties
3 x 20m black docking lines
2 x 15m black docking lines
1 x 10m black docking line
Spares kit
Vacuum cleaner
Sunseeker boat mat
Mosquito screens for all openable portlights
RINA compliance kit consisting of: 300mm bell, 2 x buckets with lines, CO₂ fire extinguisher, axe, fire blanket and fire extinguishers are all located and fitted in accordance with the safety plan

PRINCIPAL CHARACTERISTICS

SUNSEEKER 30 METRE YACHT

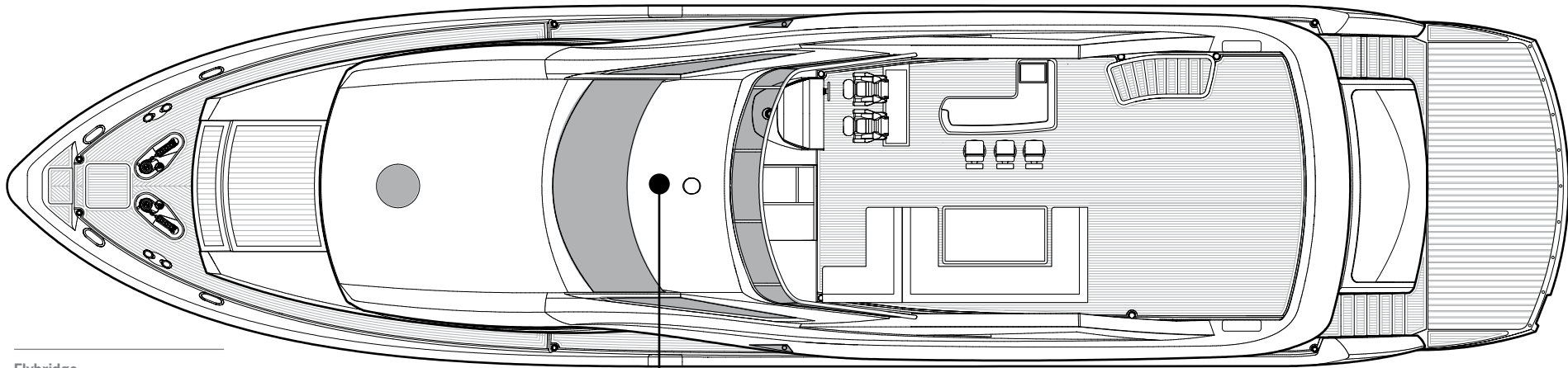
PRINCIPAL CHARACTERISTICS

Classification	Built to RINA Pleasure Craft Rules	
Length overall – (incl. pulpit and platform)	29.80m	97'9"
Beam – (maximum)	6.94m	22'9"
Height above waterline – (@ light load)	6.91m	22'8"
Draft – (@ full load – incl. props)	2.09m	6'10"
Generators	2 x 33kW @ 50Hz (Euro) 2 x 40kW @ 60Hz (US)	
Displacement	104,100kg	229,436lb
Engine options	up to 5200 PS (total)	
Propulsion	Twin fixed-pitch submerged propellers in semi-recessed tunnels	
Fuel options	Diesel	
Standard fuel capacity	9,500 litres	2,510 US gal.
Optional overload tank capacity	4,500 litres	1,188 US gal.
Total capacity (with optional tank)	14,000 litres	3,698 US gal.
Fresh-water capacity	2,000 litres	528 US gal.
Black-water capacity	435 litres	115 US gal.
Maximum speed	up to 28 knots* (subject to engine option) @ half standard fuel capacity	
Range at slow cruising speed of 10-12 knots	up to 1000 nautical miles* with optional fuel capacity (subject to engine option)	

All principal characteristics and specifications are provisional and subject to final specification.

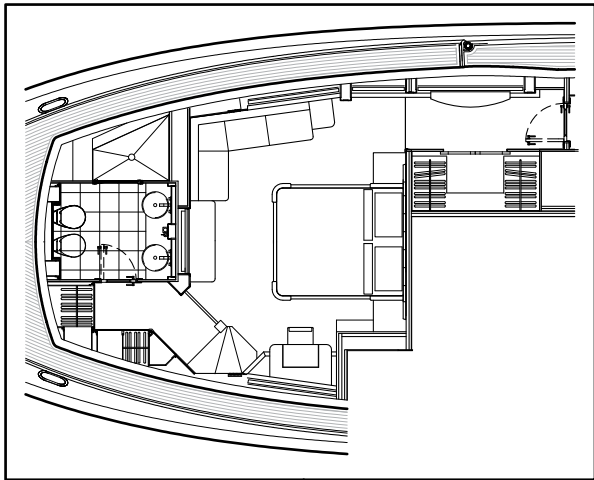
GENERAL ARRANGEMENTS

SUNSEEKER 30 METRE YACHT



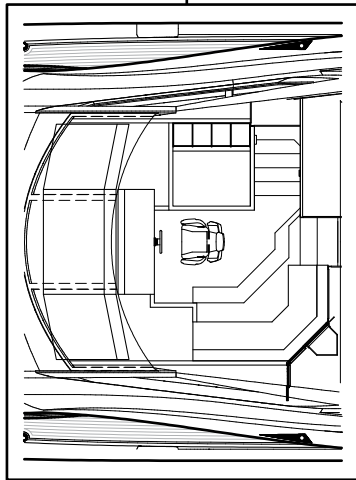
Flybridge

Shown with optional teak decking

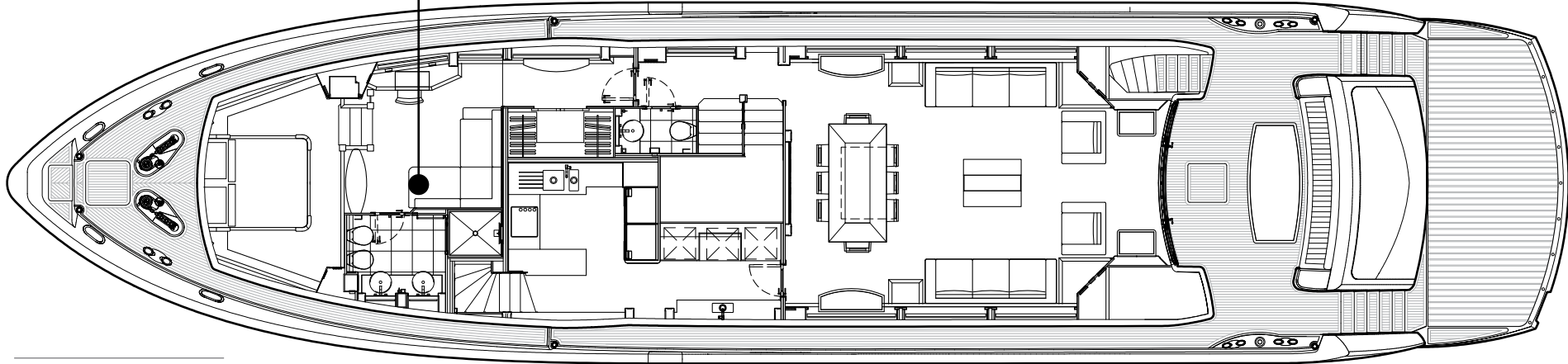


Main deck option

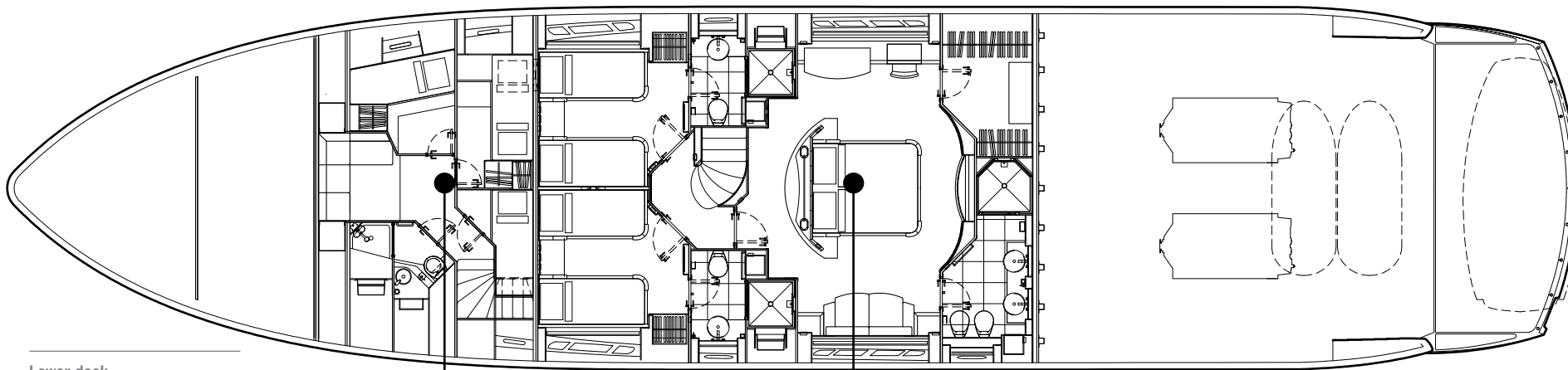
Master stateroom with ensuite



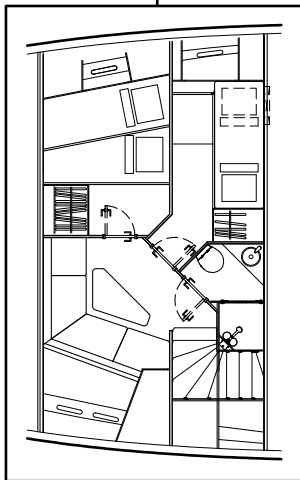
Wheelhouse



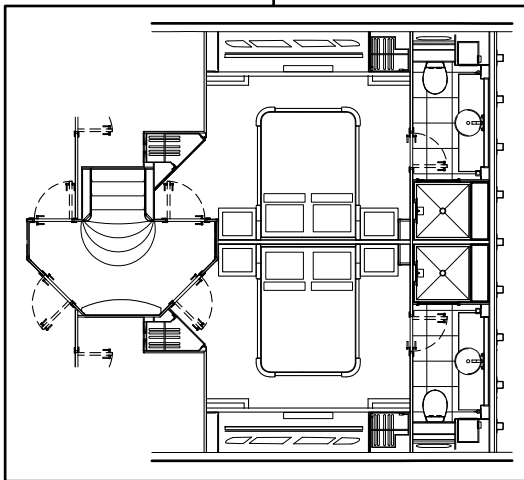
Main deck



Lower deck



Lower deck option
Two cabin crew arrangement



Lower deck option
Port and starboard double guest cabins



Awards

Sunseeker's success over the years is clearly underlined by the following list of national and international awards and achievements.

2011	Asia Boat Awards	Best brand presence in Asia	2004	Sydney Boat Show 2004	Best Overall Display
2011	European CEO corporate lifestyle awards	Best luxury brand	2004	Sydney Boat Show 2004	Best Marina Display
2011	Showboats Design Awards Florida	Naval architecture motor yacht 'Evil Zana' Predator 130.	2003	Australian Marine Awards	Manhattan 56, Award for Excellence
2010	World Superyacht Awards	Predator 130 'Evil Zana' – finalist	2003	Australian Marine Awards	Predator 68, Best Imported Non-Trailable Yacht
2010	Quintessentially Awards	Yacht charter of the year	2002	Entrepreneur of the Year Award	Robert Braithwaite MBE
2010	Sydney Boat Show	Boating Industry Association of NSW – Best Marina Display 2010	2001	Best Power Design Award	105 Yacht, The Superyacht Society
2010	Sydney Boat Show	Boating Industry Association of NSW – Best Overall Display	2001	Best Power Interior Award	105 Yacht, The Superyacht Society
2010	Asia Boating Awards	Predator 60 – Best Production Motor Yacht 51 to 80 feet	2001	President's Award	Southern California Marine Association
2009	Sydney Boat Show 2009	Display of Excellence	2000	Queen's Award for Enterprise	Continuous innovation and development
2009	Croatia Boat Show 2009	Predator 92 Sport – best in class	2000	The Times Exporter of the Year	Times Export Awards
2009	Croatia Boat Show 2009	30 Metre Yacht – best in class	2000	Robb Report Award	Best of the Best, Boating and Sailing
2009	Croatia Boat Show 2009	Best boat show stand	1999	Robb Report Award	Best of the Best, Boating and Sailing
2008	UK Motor Boat of the Year Awards 2008	Manhattan 60	1999	Motorboat of the Year	Predator 75, BT British Nautical Awards
2007	European Powerboat of the Year	Superhawk 43	1998	Superyacht Design Award	Manhattan 74, Superyacht Design Awards
2007	Asia Pacific Boating Awards	90 Yacht, Best of the Best	1998	Editor in Chief Awards	Yachts Magazine
2007	Modern Boating Magazine 2007	Portofino 47, Imported Powerboat of the Year	1997	Lifetime Achievement Award	Robert Braithwaite MBE, RYA Awards
2007	Australian Marine Industries Federation Awards	Predator 62, Imported Powerboat of the Year	1996	Motorcruiser of the Year Award	RYA British Nautical Awards
2007	Nominated by The Superyacht Society	37 Metre Yacht 'The Snapper'	1996	Exporter of the Year Award	DCCI Export Awards
2007	Queen's Award for Enterprise	International Trade	1995	Boat Builder of the Year Award	RYA/BMIF British Nautical Awards
2007	Robert Braithwaite is honoured with CBE	The Queen's Birthday Honours List	1994	Queen's Award for Export Achievement	Queen's Awards for Industry
2006	Nominated for three Superyacht Awards	Predator 108 'SHIVER'	1992	Best in the World Award	Renegade 60, Boating Magazine
2005	Australian Marine Industries Federation Awards	75 Yacht, Non-Trailable Boat Award	1992	Robert Braithwaite is honoured with MBE	The Queen's Birthday Honours List
2005	Australian Marine Industries Federation Awards	Portofino 46, Commendation	1990	Exporter of the Year	SW International Business Awards
2005	Modern Boating, Power Boat of the Year Awards	Predator 68, Imported Powerboat of the Year	1989	Queen's Award for Export Achievement	Queen's Awards for Industry
2005	Boats.com Marine Industry Web Awards	Manufacturers Category for www.sunseeker.com	1987	Queen's Award for Export Achievement	Queen's Awards for Industry



Sunseeker International Limited has CE Approval which is compulsory for all boats with a LOA of 24m and below when sold in the EU.



QUINTESSENTIALLY BRITISH

*Every attempt has been made to give accurate information, but performance and range figures are estimates given as a guide only. Dirt or growth on the hull, tuning of the engines, size, make of engines fitted, damage to propellers, the temperature of the air and water, the weight of fuel, water, stores, number of people, propeller pitch, quality of fuel and other matters, can all affect a boat's performance and range. For these and other reasons we can give no performance, range or other guarantees, and neither such guarantees nor anything contained herein constitutes an offer of contract or any representation or agreement, or may otherwise be relied upon. The photographs and artist's impressions in this brochure are from existing models in the Sunseeker range. There may be items shown in these photographs and artist's impressions that are not included in the standard inventory of the models shown. Specifications contained in this brochure are provisional only and should not be relied upon and may refer to models only intended for sale in a particular territory and not generally. No guarantee is given that any model will be available in any territory; however by contacting us we can advise you of models that are likely to be available in each territory. In some examples herein we have referred to measurements, specifications or other details applicable to a particular territory and no guarantee is given that these are applicable to your territory. Actual specifications will be provided when a sales order or enquiry is placed with us or our approved Sunseeker distributor. Specifications for models sold in different markets may vary and specifications and models may be changed or withdrawn at any time without prior notice. The individual specification for each vessel will be agreed as part of the sale contract between the purchaser and the Sunseeker distributor. Distributors are independently owned and operated entities, and therefore Sunseeker distributors are not owned by Sunseeker International Limited or any subsidiaries or other related entity of this company nor are they their agents. Therefore they have absolutely no authority to commit Sunseeker International Limited, or any subsidiary or other related entities of Sunseeker International Limited to any pledge, contract or agreement in any form or by any means unless first accepted in writing by Sunseeker International Limited. For ease of reference we have, in some cases, referred to "we" or "Sunseeker" and these terms should be taken to mean Sunseeker International Limited.